



ADVANCED STUCCO TECHNOLOGY



Stuc-O-Flex International, Inc.

WaterWay Drainage Mats / Rainscreen

Stuc-O-Flex / Elastomeric Acrylic Finishes

EuroPlast - EuroSeal / Venetian Plaster

WaterWay Drainable Stucco Assembly

Direct Applied Coating Systems / DEFS

Exterior Insulation & Finish Systems / EIFS



STUC-O-FLEX[®]
INTERNATIONAL, INC.



STUC-O-FLEX[®]

INTERNATIONAL, INC.

After **Twenty Five** years of formulating, testing and manufacturing vertical wall products, Stuc-O-Flex International, Inc. understands the appearance of any project is the one element that immediately reflects the quality and integrity of the building, as well as the construction team involved. Our mission is to compliment those efforts with products of the highest quality and enhance cladding performance through **Rainscreen** configuration.

Stuc-O-Flex International created America's first **Breathable Elastomeric Acrylic Finish** back in 1983. More recently we've advanced the science of vertical wall Rainscreen in drainable Stucco, Stone, EIFS and siding assemblies incorporating technologies unprecedented in past years. Unparalleled expertise in Acrylic Polymer Chemistry and our **WaterWay™** line of **Rainscreen Drainage Mats** assures extended service life and exceptional appearance on your completed projects. Whether your design requires a decorative textured coating, direct applications to substrate sheathing, EIFS, Stucco, ICF finish systems, Drainable Rainscreen assemblies or applications to enhance standard metal building construction, no company offers a broader selection of wall cladding and configuration options.

Unequaled growth over the past two and a half decades and a listing in **INC. Magazines' 500 Fastest Growing Companies** reflects our philosophy and commitment to innovation, research & development, and uncompromising quality control.

Our stability in ownership sharing resources with three sister companies, supported by six office locations throughout the U.S. and distribution in 22 countries confirm our stability and experience. With over **500 Million Feet** in service world wide subjected to every conceivable climate, we look forward to supporting your next new construction, retrofit or remodel project.

For a complete Architectural Manual with product data, specifications and detail drawings or samples of **Stuc-O-Flex** finish and profiles of our **WaterWay** Rainscreen Drainage Mats contact:

1-800-305-1045 / Toll Free
425-885-5085 / Corporate Office
www.stucoflex.com / Web
info@stucoflex.com / E-mail



STUC-O-FLEX[®]
INTERNATIONAL, INC.

STUC-O-FLEX®

ADVANCED FINISH INTEGRITY

Stuc-O-Flex Elastomeric Acrylic Finishes provide a protective weathering membrane in a pre-colored, extremely durable, fade and mildew resistant coating. The industry's highest level of 100% Acrylic Polymer ensures optimum resistance to surface cracking unlike competitive finishes. An unlimited selection of colors in four distinct aggregate choices create a wide variety of texture opportunities from the heaviest southwest stucco to the more contemporary sand finish.



- Maximum Crack Coverage & Bridging Abilities
- Breathable Membrane = 13 Perms Average
- Calcium - Marble Aggregates (Prevents Rust) / No Silica Sand
- Coating Integrity - Exceeds 30 Year Exposure
- Comprehensive ASTM Third Party Testing
- 500 Million Feet in Service World Wide
- Equally Effective Regardless of Climate (-70°F to 150°)
- Class A Fire Rated
- New Construction, Retrofit or Repair
- America's First Elastomeric Acrylic Finish



AGREGATE CHOICES



Fine



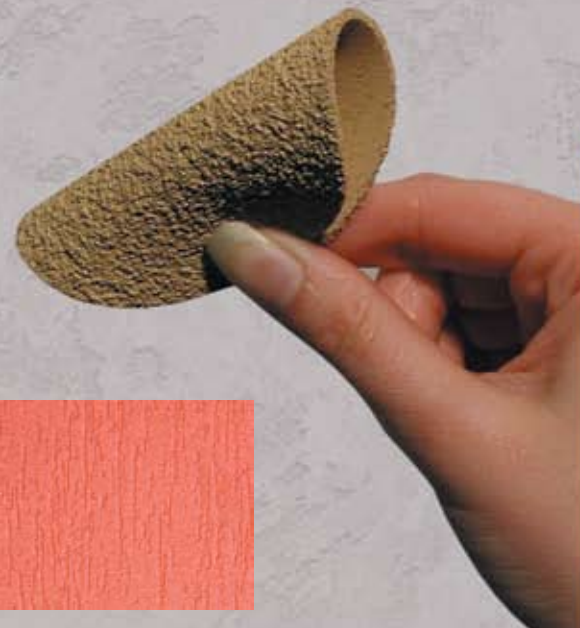
Sand



Modified



Putz



STUC-O-FLEX®
INTERNATIONAL, INC.



STUC-O-FLEX[®]
INTERNATIONAL, INC.

STUC-O-FLEX®

Stuc-O-Flex combines the warmth and beauty of traditional stucco with the performance and insurance of elastomeric coatings. The Stuc-O-Flex finish is a premixed color integrated textured coating that is easily applied utilizing current labor skills and equipment. It can be either spray or trowel applied in an unlimited selection of colors and textures.

The 105% elongation (stretchability) in Stuc-O-Flex insures optimum crack resistance even in the most demanding applications and details. With our comprehensive package of ASTM testing by independent laboratories, Stuc-O-Flex has the validity and track record to satisfy the most discriminating clientele. Unequaled performance provides your clients with an attractive durable wall surface, requiring only minimal maintenance regardless of environmental conditions.

Popular Colors



Colors are representations only. Please contact us for a color chart.

TEST	METHOD	RESULTS
Elongation % Finish		105 Percent
Water Vapor Transmission	ASTM-E96	13 Grains per hour / sq.ft. (average)
Salt Spray Resistance	B-117	300 hours. No deleterious effects
Accelerated Weathering	G-23-81	2000 hours. No deleterious effects
Absorption Freeze Thaw	60 Cycles	No cracking, checking
Tensile Bond	ASTM C-297	127.9 PSF
Water Penetration Test	ASTM-E-331	No water penetration occurred on substrate
Water Resistant Test	ASTM D-2247	No cracking, blistering, peeling or compromise
Mildew/Fungus Resistance	810 B	No mold or mildew growth during test
Wind Driven Rain		No delamination, No water intrusion
Fire Testing Tunnel Test	ASTM E-84	Flame spread < 25 Smoke developed < 450 Class "A" fire rated

* Additional test data available.



STUC-O-FLEX[®]
INTERNATIONAL, INC.

EUROPLAST®

ENDURING ARCHITECTURAL ELEGANCE

EuroPlast is a pre-colored, wet-mix 100% Acrylic polymer based interior and exterior coating system that transforms vertical walls into a classic example of Old World Venetian Style Plaster. This versatile decorative coating exhibits a rich aesthetic appearance with unlimited color and texture opportunities. Achieve a wide range of effects from Rustic plaster to smooth polished limestone.

- Venetian Plaster at a Fraction of the Cost
- Unique Formula Reduces Application Time
- Hard and Durable - Ideal for Interiors
- Applications: Stucco, Brick, Block, Plaster, Cement Board, EIFS, Concrete
- Primed Drywall for Interior Walls



EUROSEAL®

EuroSeal is a 100% Acrylic Polymer Antiquing Sealer for EuroPlast Finish. Euroseal can also be applied to Stucco, Plaster, Concrete, Brick, Block, Stone, and Acrylic finishes creating an “antique” or weathered appearance. It is highly resistant to moisture and helps to shed water in vertical wall applications while minimizing challenges associated with efflorescence and dirt pick-up.

- Creates an Old World Appearance in New Construction
- Breathable Film
- Resists Water Penetration
- Outstanding Resistance to Dirt Pick-Up
- Stays Clear – Non Yellowing Acrylic
- Resists Mold and Mildew Growth
- Easy to Apply – Spray and Back-Roll



STUC-O-FLEX®
INTERNATIONAL, INC.



STUC-O-FLEX[®]
INTERNATIONAL, INC.

WATERWAY™

RAINSCREEN DRAINAGE MATS

CREATE SPACE BETWEEN YOUR BUILDING & THE ELEMENTS

“WaterWay” Rainscreen Drainage Mats consist of a Nylon / Polymer core of fused, entangled filaments in varying thicknesses from a nominal ¼ inch to ¾ inch, depending on desired cavity space and cladding selection. Certain profiles are available with a protective filter fabric bonded to one side. “WaterWay” Rainscreen Mats are designed for stucco, EIFS, manufactured stone, fiber-cement, brick, lap and cedar sidings and other wall system materials.

- 50 Times more Efficient at Draining Water than a Traditional WRB alone
- Redirects Moisture Away from Vulnerable Wall Sheathing Materials
- Filter Fabric Ensure Cavity Remains Un-Interrupted
- Green Build Advantage / Recycled Content Adds up to 3 Leed Points
- 52 Million Feet in Service
- Extensive Selection of Profiles
- Complete Testing, Specifications & Details
- Exceeds AC-24 drainage criteria for EIFS
- Promotes Pressure Equalization
- No Special Skill or Training Required
- Very Competitive vs. Strapping or Furring
- Reduce Potential Exposure
- Accommodates 10mm Canadian Code Requirement

Waterway
Rainscreen Drainage Mat



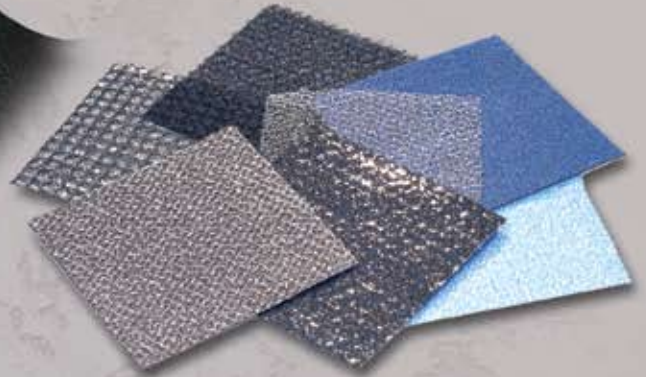
From Boston to Seattle, WaterWay rainscreen drainage mats are finding acceptance with some of the most recognized and distinguished building enclosure specialists in North America. In both new construction and cases of cladding remediation, WaterWay Mats accommodate essential criteria in today's construction environment. Enhancing cladding performance with rainscreen configuration assures extended service life, superior product performance and increased customer satisfaction.

STUC-O-FLEX®
INTERNATIONAL, INC.

RAINSCREEN

Building Code Mandates:

“Exterior wall envelopes are required to be weather-resistant and provide a means for draining water that enters the assembly”



WATERWAY™ PLUS

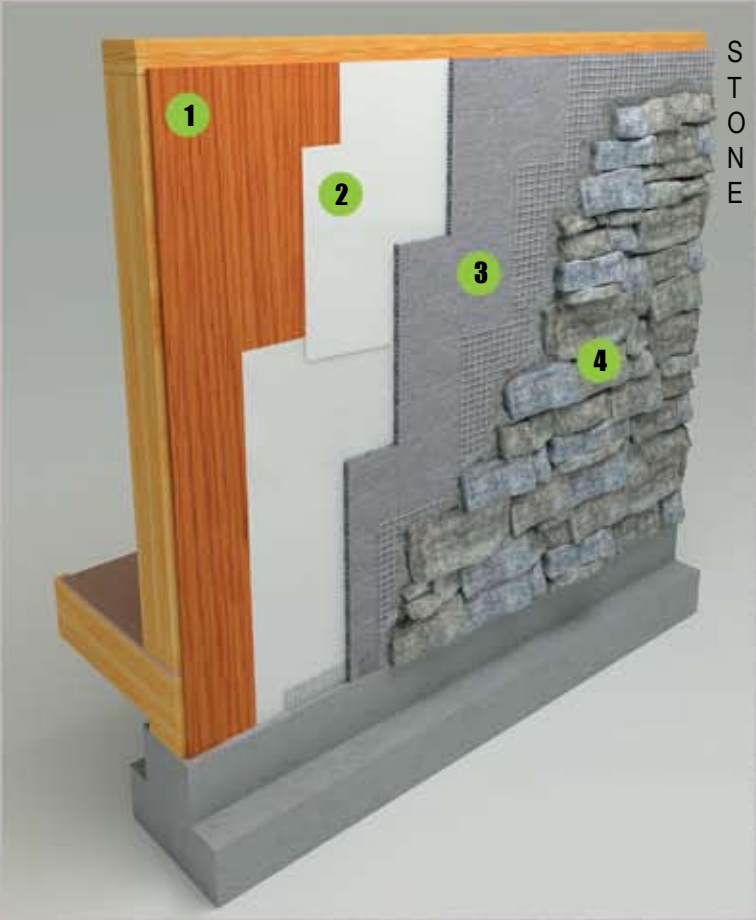


WaterWay Plus is a revolutionary **Patent Pending** rainscreen drainage mat consisting of a 7/16 inch / 11mm extruded polymer matrix of tangled monofilaments. The monofilaments are laminated to a breathable, filter fabric on one side and a code compliant weather resistive barrier on the other side. This multiple layer product creates a one step weather resistive barrier and rainscreen drainage assembly in a single application. This rainscreen product provides an un-interrupted drainage path & ventilation for incidental moisture between wall sheathing and exterior finish materials.



RAINSCREEN

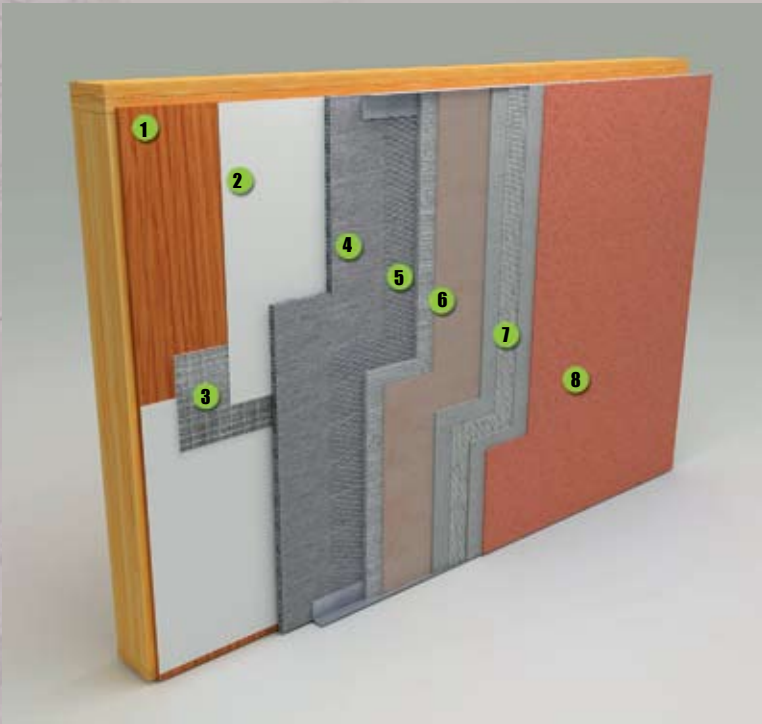
EXTERIOR CLADDING OPTIONS



- 1** Substrate
- 2** Weather Resistive Barrier
- 3** WaterWay Rainscreen Drainage Mat
- 4** Stone Veneer

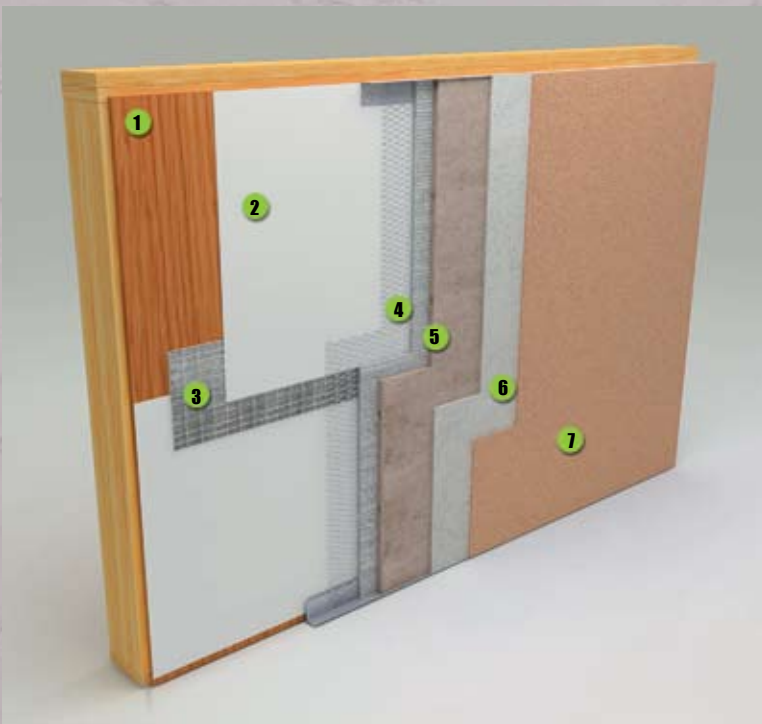


WALL ASSEMBLIES



WaterWay Drainable Stucco Assembly

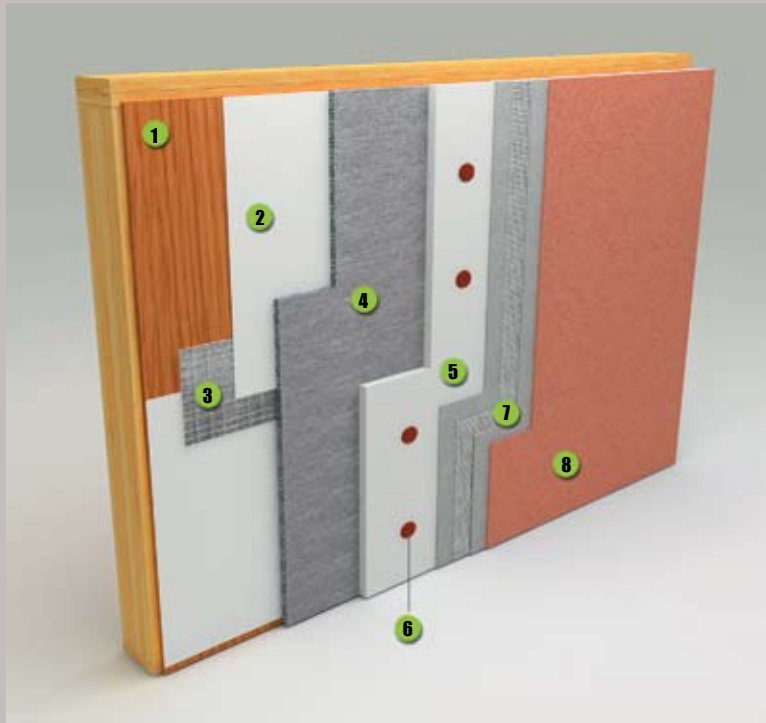
- 1 Substrate / Sheathing
- 2 Weather Resistive Barrier (WRB)
- 3 Therm-Flash (peel & stick) - *optional*
- 4 WaterWay Rainscreen Drainage Mat
- 5 Lath
- 6 Scratch & Brown Coat (stucco)
- 7 Base Coat & Reinforcing Mesh - *optional* (PRM or Stuc-O-Base)
- 8 Stuc-O-Flex Elastomeric Acrylic Finish or Europlast / Euroseal



Stuc-O-Flex or Europlast / Euroseal over Traditional Stucco

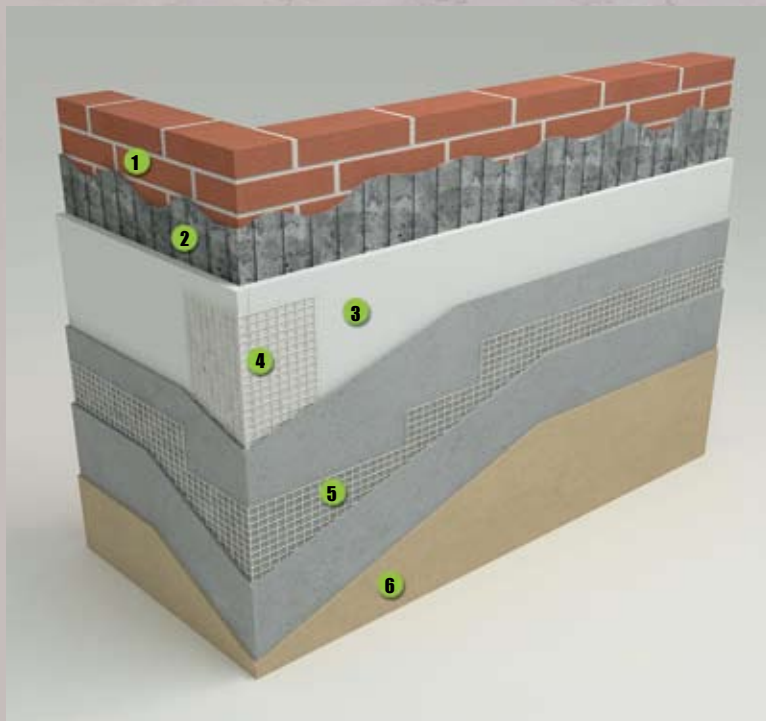
- 1 Substrate / Sheathing
- 2 Weather Resistive Barrier (WRB)
- 3 Therm-Flash (peel & stick) - *optional*
- 4 Lath
- 5 Scratch & Brown Coat (stucco)
- 6 PRM or Stuc-O-Base - *optional*
- 7 Stuc-O-Flex Elastomeric Acrylic Finish or Europlast / Euroseal

WALL ASSEMBLIES



WaterWay Drainable EIFS Assembly

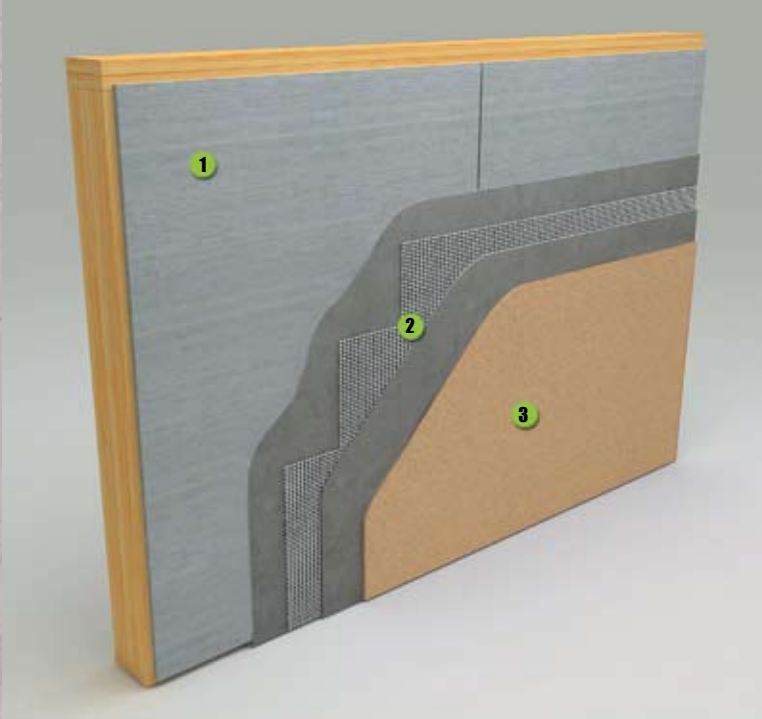
- 1 Substrate / Sheathing
- 2 Weather Resistive Barrier (WRB)
- 3 Therm-Flash (peel & stick) - *optional*
- 4 WaterWay Rainscreen Drainage Mat
- 5 Insulation Board
- 6 Mechanical Fasteners (Insulation)
- 7 Base Coat & Reinforcing Mesh (PRM or Stuc-O-Base)
- 8 Stuc-O-Flex Elastomeric Acrylic Finish or Europlast / Euroseal



EIFS - Adhesive Attachment

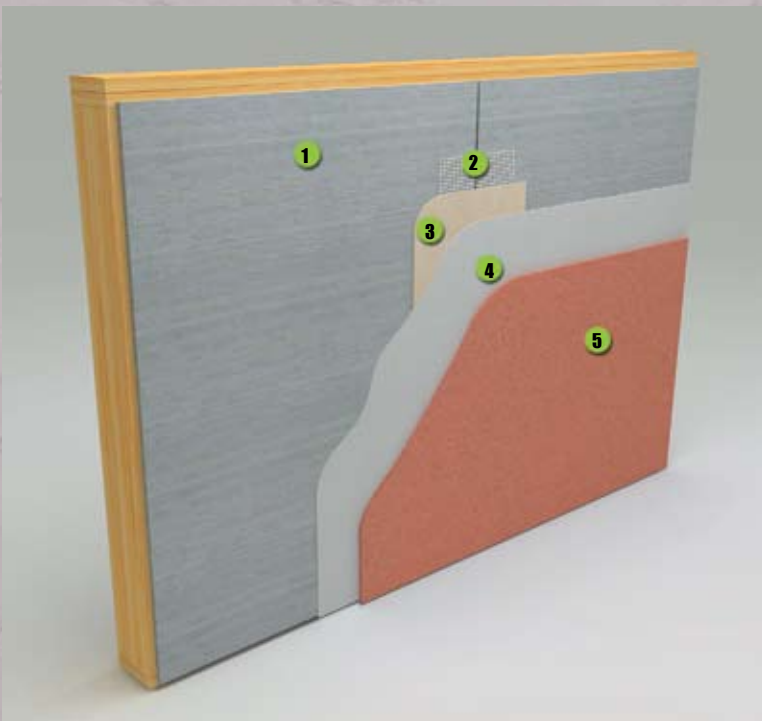
- 1 Cementitious Substrate
Brick / Block / Concrete
- 2 PRM or Stuc-O-Base / Adhesive
- 3 Insulation Board
- 4 Reinforcing Corner Mesh
- 5 Base Coat & Reinforcing Mesh (PRM or Stuc-O-Base)
- 6 Stuc-O-Flex Elastomeric Acrylic Finish or Europlast / Euroseal

WALL ASSEMBLIES



Application to Cement Board

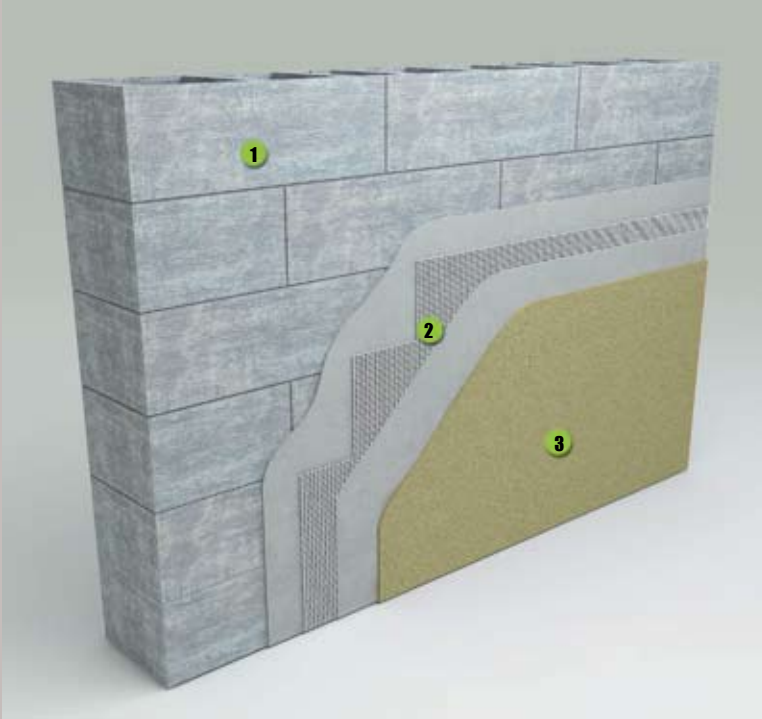
- 1 Cement Board
- 2 Base Coat & Reinforcing Mesh (PRM or Stuc-O-Base)
- 3 Stuc-O-Flex Elastomeric Acrylic Finish or Europlast / Euroseal



Application to Cement Board (UC)

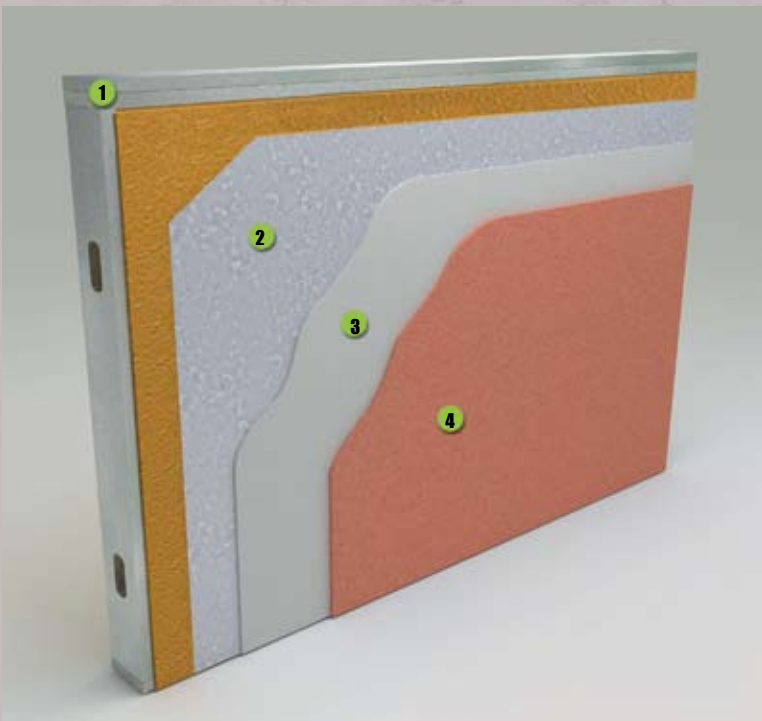
- 1 Cement Board
- 2 Reinforcing Mesh
- 3 Elastomeric Joint Compound
- 4 PrimeSeal™ (Primer)
- 5 Stuc-O-Flex Elastomeric Acrylic Finish

WALL ASSEMBLIES



Application to Concrete Surfaces

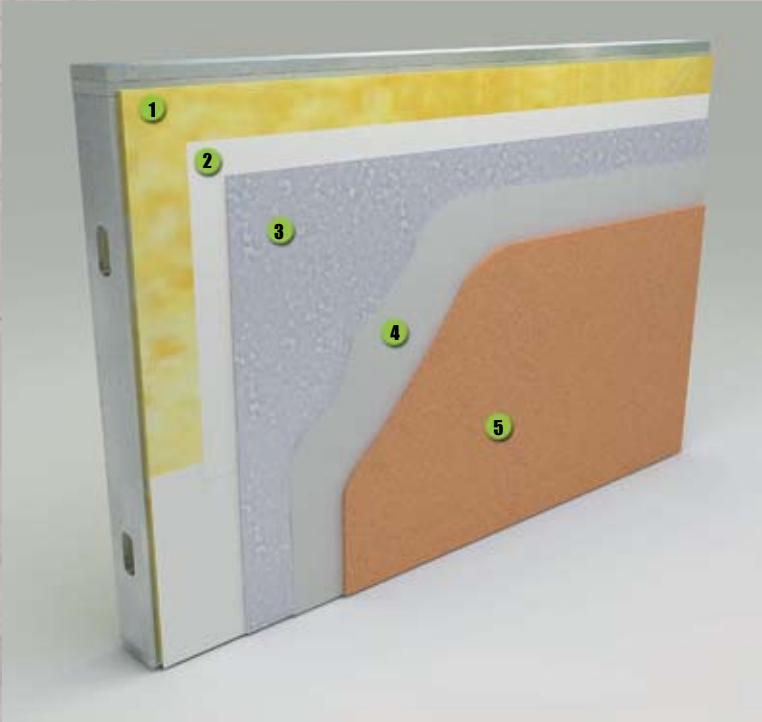
- 1 Cementitious Substrate
Brick / Block / Concrete
- 2 Base Coat & Reinforcing Mesh
(PRM or Stuc-O-Base) *optional*
- 3 Stuc-O-Flex Elastomeric Acrylic Finish
or Europlast / Euroseal



Application to Insulated Metal Panels

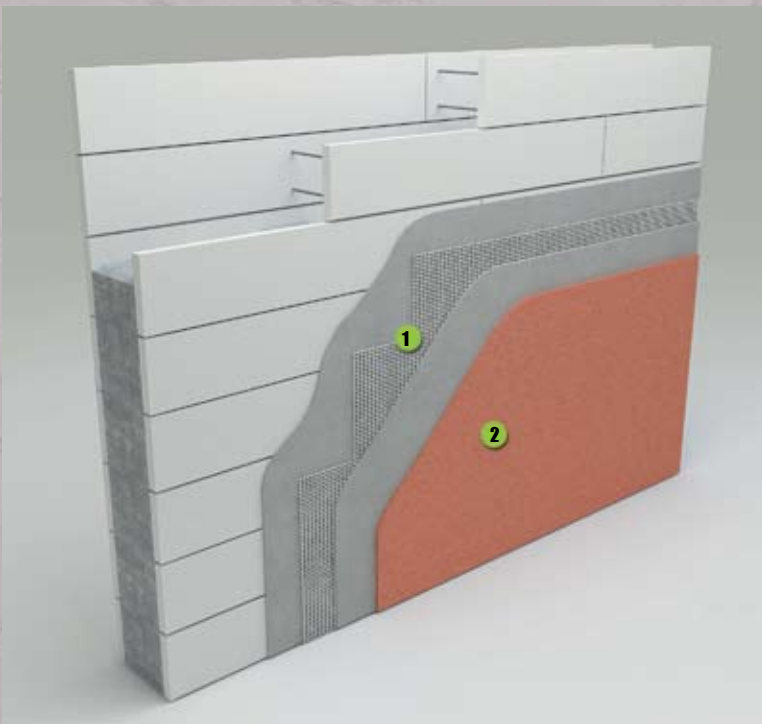
- 1 Framing
- 2 Insulated Metal Panels
- 3 Primer (as required)
- 4 Stuc-O-Flex Elastomeric Acrylic Finish

WALL ASSEMBLIES



Application to Metal / ACM Panels

- 1 Substrate / Sheathing
- 2 Weather Resistive Barrier (WRB)
- 3 Metal or ACM Panel
- 4 Primer (as required)
- 5 Stuc-O-Flex Elastomeric Acrylic Finish



ICF (Insulated Concrete Forms)

- 1 Base Coat & Reinforcing Mesh (PRM or Stuc-O-Base)
- 2 Stuc-O-Flex Elastomeric Acrylic Finish or Europlast / Euroseal

COMPANION PRODUCTS

Stuc-O-Base (adhesive - base coat) - A wet mix, fiber reinforced, acrylic polymer adhesive / base coat – mix 1 to 1 with Portland cement.

PRM (polymer reinforced mortar) - A powdered polymer reinforced adhesive and underlayment for use with acrylic finish coatings.

Applications:

As a leveling coat - applied with stainless steel trowels at a minimum 1/16inch, trowel smooth.

As an Adhesive – Apply to the backside of insulation board with a 3/8 inch notched trowel. Apply ribbons over the entire surface and adhere insulation to prepared substrate.

As Reinforcement - Stuc-O-Base / PRM should be used in conjunction with fiberglass mesh. Immediately embed fiberglass mesh into wet base coat troweling from the center to the edges creating a smooth surface.

Fiberglass Reinforcing Mesh - A woven and treated fiberglass mesh used in Stuc-O-Flex wall assemblies providing strength and impact resistance. Once embedded into the Stuc-O-Base or PRM layer, the fiberglass mesh creates continuity in the surface and supports resistance to cracking.

Application:

Apply a layer of Stuc-O-Base or PRM to the substrate. Immediately imbed the fiberglass mesh into the wet base coat layer by pushing it in with a trowel, working from the center out to the edges. The mesh should be fully imbedded such that no mesh pattern is visible. Reinforcing fabric shall be continuous and overlapped 2 inches in accordance with Stuc-O-Flex specifications. Avoid wrinkles in the mesh and smooth out wall surface with the trowel.

* See Product Data Sheets for additional information.

Stuc-O-Flex ReNew – A pure acrylic, highly elastomeric topcoat that can be applied like latex paint. The formulation is identical to Stuc-O-Flex finish excluding the aggregate. Renew provides maximum crack bridging ability in a paint applied coating.

Application:

Preferably by spray and back-rolling. May be applied with roller or brush using care to achieve a minimum mil thickness (20 wet mils).

Prime Seal - A specialized primer/sealer designed to block staining and bleed-through. Excellent sealer for stucco - creates uniform porosity and reduces potential efflorescence.

Application:

Applied using a brush, roller, or spray equipment. Apply to a uniform thickness free of pin-holes or voids. Screen prior to spray applications.

Elastomeric Joint Compound – A polymer based, extremely stretchable joint bridging and leveling compound used over seams and joints on direct applications, also used to repair cracks in stucco, brick, CMU, and concrete walls.

Application:

Joint Compound is applied using a drywall knife or trowel with sufficient pressure to ensure deep penetration into the joint or crack. For direct to sheathing applications - seams, inside and outside corners require mesh to be imbedded in Joint Compound. See specifications for details.

Therm-Flash - Self adhering membrane with durable aluminum surface and butyl rubber adhesive. Excellent tear and puncture resistance. The nominal 24-mil flashing (20 mils of butyl plus 4 mils of reinforcing foil film) provides a tight seal around windows, doors and other through wall penetrations.

ADVANCED STUCCO TECHNOLOGY



STUC-O-FLEX[®]
INTERNATIONAL, INC.

www.stucoflex.com

1-800-305-1045