

Fortress Gate[®]

Ornamental



Fortress Ornamental Gates are adaptable to nearly any type of Tymetal gate configuration and are the perfect choice for closures that need security with an attractive design and finish. Some options of gate choices available include: heavy-duty, structural and box frame cantilever slide gates, swing gates and vertical lift gates, just to name a few.

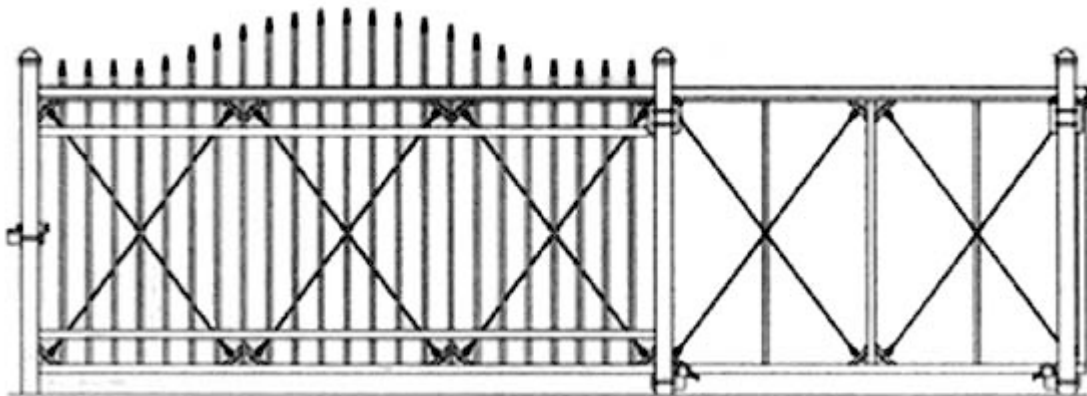
The frame and pickets are fabricated from aluminum alloy extrusions with primary members on the top and bottom, as specified per gate type. Pickets are 1"x1" square aluminum and can be internal or external, flat top or smashed point and can be arranged in a convex or concave configuration.

Picket spacing is available on 2", 3", 4", or 5" centers, or other spacing upon request. Finishes are available in mill aluminum or baked on powder coating in standard or custom colors.



NOTE: Industry safety standards require openings on slide gates to be no greater than 2.25" up to 48" height above grade (4.25" opening is allowed between 48" and 72" above grade).

Tymetal Corp. will supply screening (black plastic fabric) to be attached to gates that have picket spacing which exceed the 2.25" maximum.



TYMETAL CORP.

A FORT MILLER GROUP COMPANY

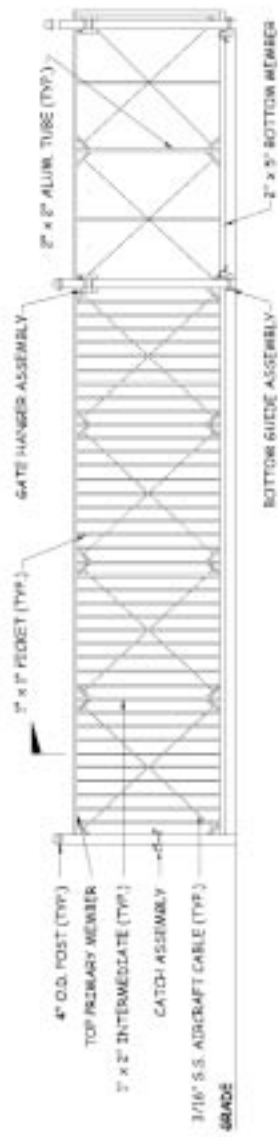
TC-29 © September 2002

2566 State Route 40
Greenwich, NY 12834

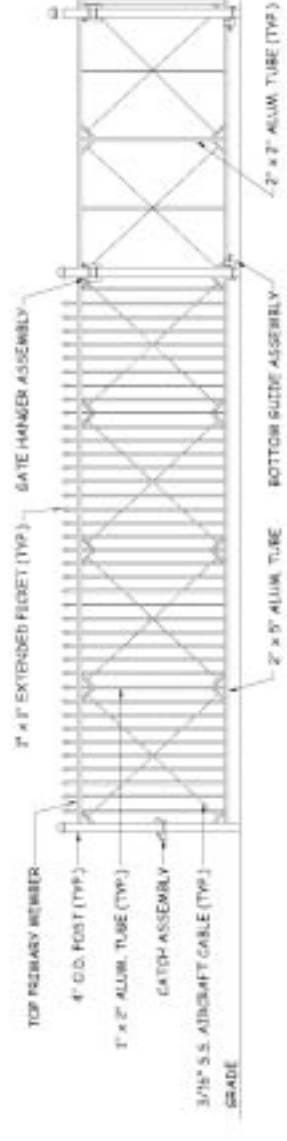
WWW.TYMETAL.COM

1-800-328-GATE
(4283)

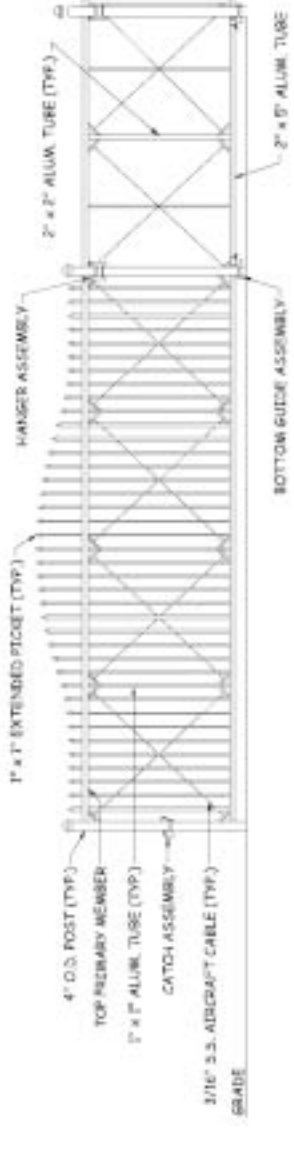
Fax 1-518-692-9404



INTERNAL PICKET GATE

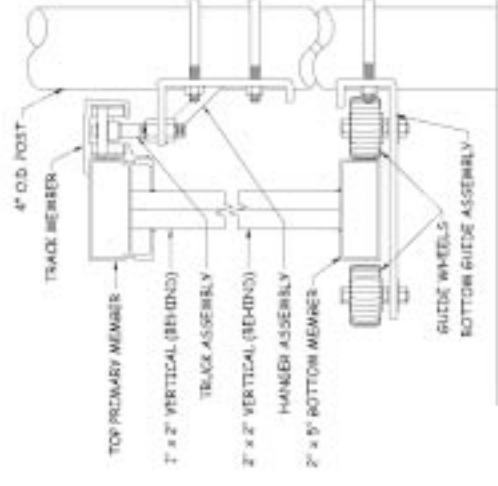


EXTENDED PICKET GATE

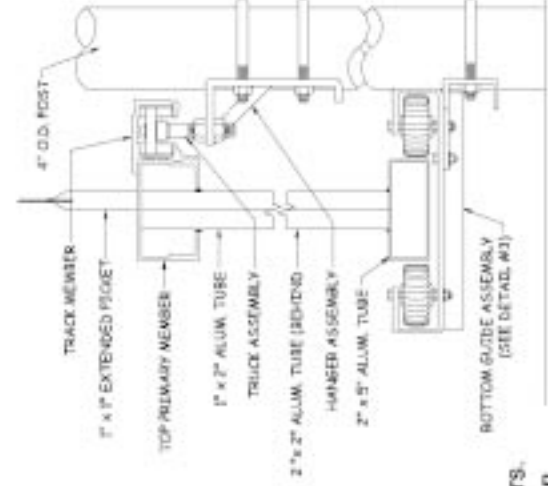


COMPOUND CURVE EXTENDED PICKET GATE

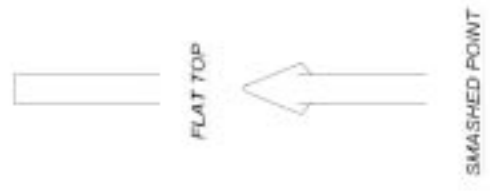
The above are samples of the types of ornamental gate designs that the Tymetal Corp. offers. Tymetal is equipped to fabricate ornamental gates to match nearly any possible configuration. Please contact the Tymetal Design Department to discuss your potential design.



INTERNAL PICKET GATE SECTION



EXTENDED PICKET GATE SECTION



PICKET TYPES