

2008 Masonry Flashings & Accessories

For moisture protection,
one name **stands out.**





ADVANCED TECHNOLOGY
for copper flashings

WHY COPPER

Masonry buildings have stood the test of time. Known for their strength, beauty, and longevity, masonry structures are a statement of our past, present, and future. The proper use of quality masonry flashing is the one sure way to protect against moisture migration in a masonry structure. Copper flashings have long been the flashing of choice providing decades of moisture protection. Only copper can boast a success story that dates back over 100 years. Resistant to all harmful effects of the acid and alkali present in fresh mortar, copper will out perform all other flashing products. It is always important to get the most out of every construction dollar. An investment in copper flashing will bring a worthwhile return on any construction project. When the specification calls for masonry, the only permanent choice for flashing is copper.

THE MANY LIVES OF COPPER FLASHING

This structure was originally a post office. Over twenty years later, it was converted to a bank, and soon it will be the home of a donut shop. For over 40 years the Copper Fabric Flashing that was originally installed has protected against moisture migration. Soon the old bank deposit drop will go. The original copper flashing will stay. *Copper for the life of your building.*



COPPER SEALTITE 2000
Non-Asphaltic!

Back in 1999, our President & CEO, Richard Lolley, came up with the idea of a non-asphaltic copper fabric flashing. This flashing would be compatible with most sealants on the market, lighter in weight, easy to use on any jobsite and have the ability to form its own natural copper drip edge. After receiving a patent in 2000 for this innovative flashing we named it Copper Sealtite 2000. Not to take anything away from all other quality copper laminated flashings, Copper Sealtite 2000 gives our customers an option to go either asphaltic, or non-asphaltic, depending on what the job calls for.

Available in 3 and 5oz.
Size: 36" x 60'
Will slit to multiple widths



COPPER FABRIC

For over 80 years Copper Fabric flashing has proven itself as a long lasting dependable thru-wall flashing. The two layers of dense glass fabric and a special blended asphalt are laminated to the copper core to produce greater tensile strength and improve puncture resistance. The composition of copper, glass fabric, and asphalt will ensure a permanent bond in the mortar joint and protection from moisture.

Available in 2, 3, 5, and 7oz.

Size: 36" x 25' Will slit to multiple widths.

COP-R-KRAFT DUPLEX

A full copper sheet weighing 2,3 or 5oz. per square foot bonded between two layers of waterproofed, creped kraft paper with a plasticized asphalt compound. The 3 and 5oz. weights are reinforced with glass fibers to meet GSA, FHA and Corps of Engineers specifications. This strong but flexible masonry flashing will give you economical and permanent moisture protection.

Size: 36"X 60' Will slit to multiple widths.

COP-R-KRAFT & COP-R-SHIELD

A full sheet of copper available in either 2 or 3oz. per square foot bonded to a layer of waterproofed creped kraft paper with a plasticized asphalt compound. The 3oz. weight is reinforced with glass fibers and will meet FHA specifications.

Size: 36" x 60' Will slit to multiple widths.

COP-R-COTE

A quality masonry flashing incorporating a full sheet of copper weighing 2,3,5 or 7oz. per square foot coated with a special plasticized asphalt. The total weight of the asphalt coating will weigh not less than 6oz. per square foot. Complete resistance to acid and alkali will ensure permanent moisture protection.

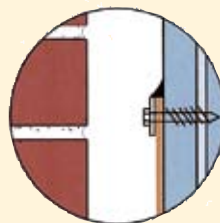
Size: 36" x 25' Will slit to multiple widths.

RIP-NO-MOR flashing clips

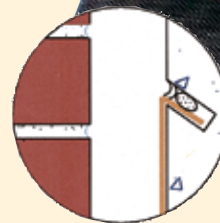
High winds can damage all types of thru-wall flashings while on a jobsite. Rip-No-Mor flashing clips are used to secure flashing that is in the backup wall while waiting for the brick veneer to be constructed. These clips will prevent masons from having to buy and install their flashing twice. The Rip-No-Mor clips are made from a durable stainless steel, so they are re-usable.

Below: Three recommended ways to attach thru-wall flashing to the backer wall.

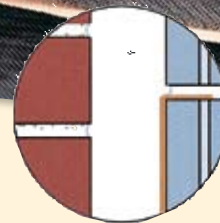
Copper fabric



Flashing secured with a termination bar



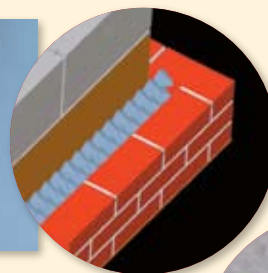
Flashing secured in a masonry reglet



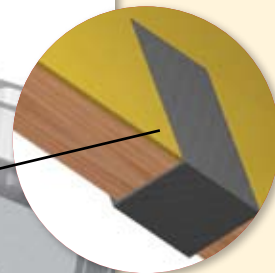
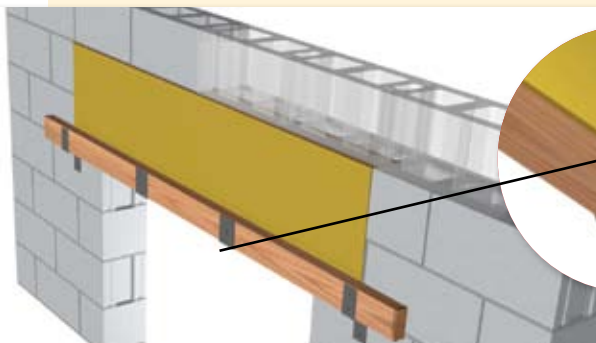
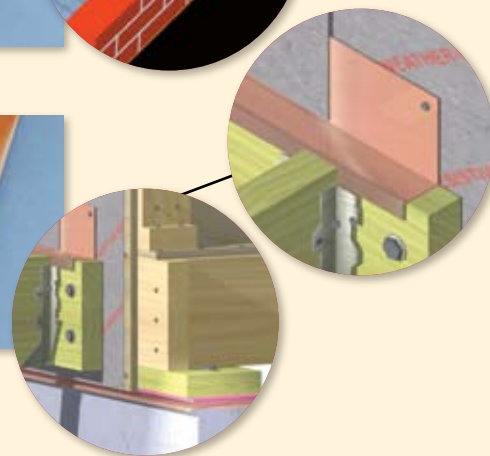
Flashing secured in a masonry joint



Cop-R Kraft Duplex



Cop-R Kraft & Cop-R Shield





COP-R-CORNERS *(patent pending)*

Advanced Building Products offers pre-fabricated copper corner assemblies that make flashing masonry corners an easy one-step operation. These corners are available as inside and outside sets that are adjustable for varying field conditions with generous flange widths to easily fit different cavity wall applications. Asphalt coating at seams and flanges results in better mortar bonding and watertight peace of mind. Cop-R-Corners are constructed from 5oz. copper that will last the life of the structure. Cop-R-Corners allow masons to make leak proof corners in a fraction of the time and at a fraction of the cost.



Cop-R-Corner

GRAY SEAL

Gray Seal is an economical 40 mil. UV resistant flashing system complete with pre-fabricated end dams and corners. Gray Seal is a proven alternative to other 40 mil. non-asphaltic membranes on the market and is suitable for commercial and residential applications.

The Gray Seal advantage...

- Durable, affordable & easy to install.
- Will not drool in warm climates.
- Will not become brittle in cold climates.
- UV resistant.
- Compatible with all contact cements.
- Extreme puncture and tear resistance.
- Compatible with acids & alkali in fresh mortar.
- Mold and Mildew Resistant.

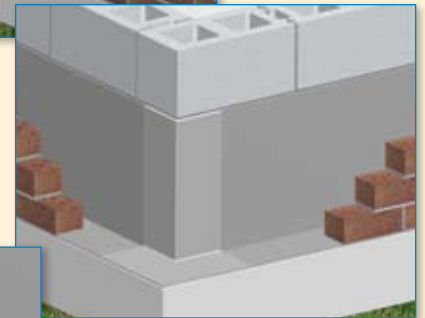
Size: Available in multiple widths x 75'



Gray Seal



Inside Corner



Outside Corner



End Dam

VAPE-R-SEAL

Our Vape-R-Seal is a 40 mil. self-adhesive rubberized asphalt membrane laminated to an aluminum foil for better UV protection during installation. Vape-R-Seal is used to provide a complete barrier to moisture and air when adhered to an above ground substrate. Vape-R-Seal can either be applied vertically or horizontally to concrete, gypsum, steel and wood substrates.

Size: 36" x 75'

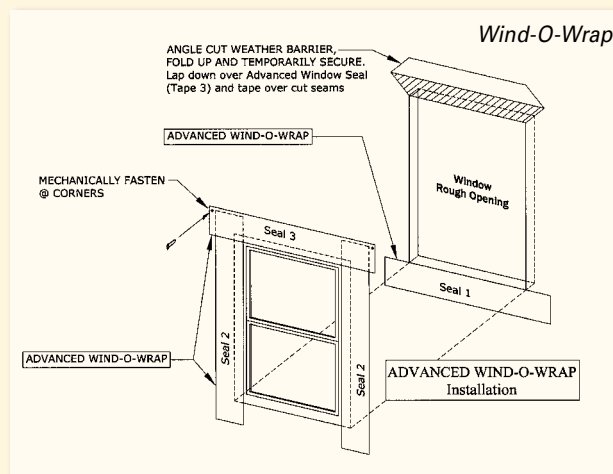
Note: Vape-R-Seal is an air barrier not to be confused with a thru-wall flashing. We recommend using copper as your thru-wall flashing along with an air barrier system.



WIND-O-WRAP

Wind-O-Wrap is to be used with our Vape-R-Seal product line to seal around windows keeping heat loss and moisture infiltration to a minimum. Wind-O-Wrap is made from a 25 mil. self-adhering membrane with an aluminum foil laminated to rubberized asphalt. Wind-O-Wrap is also a very good residential window flashing.

Size: 4", 6", or 9" x 100'



PEEL-N-SEAL

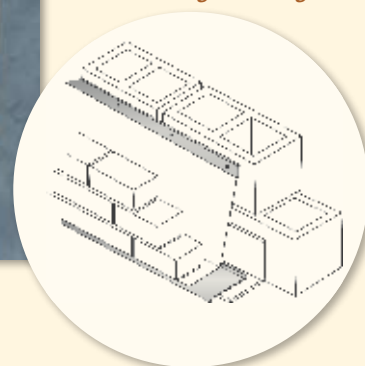
Peel-N-Seal is a 40 mil. thick waterproofing membrane consisting of a self-adhering rubberized asphalt laminated to a high density polyethylene film. A special release liner prevents the membrane from sticking to itself in the roll. The heavy polyethylene film is resistant to cuts and tears while providing excellent waterproofing characteristics.

Size: 12", 16", 18", 24" and 36" x 75' rolls



Peel-N-Seal

Note: We recommend using a termination bar and drip edge when installing any self-adhering flashing.



MOISTSEAL

Moistseal is a polyvinyl chloride sheet available in 10, 20, 30 and 60 mils. Recommended for concealed applications only, Moistseal is an excellent waterproofing membrane. It will show non-cracking or flaking when bent through 180 degrees over a 1/32" mandrel and then bent at the same point over the same size mandrel in the opposite direction through 360 degrees. The material conforms to ASTM Standard D-822 for at least 400 hours. Strict quality control assures full weight and uniform thickness.

Sizes

10 mil.	48" X 100'
20 mil.	60" X 150'
30 mil.	60" X 100'
60 mil.	48" X 50'

Note: We do not recommend the use of Moistseal as a long term thru-wall flashing.



mortairvent

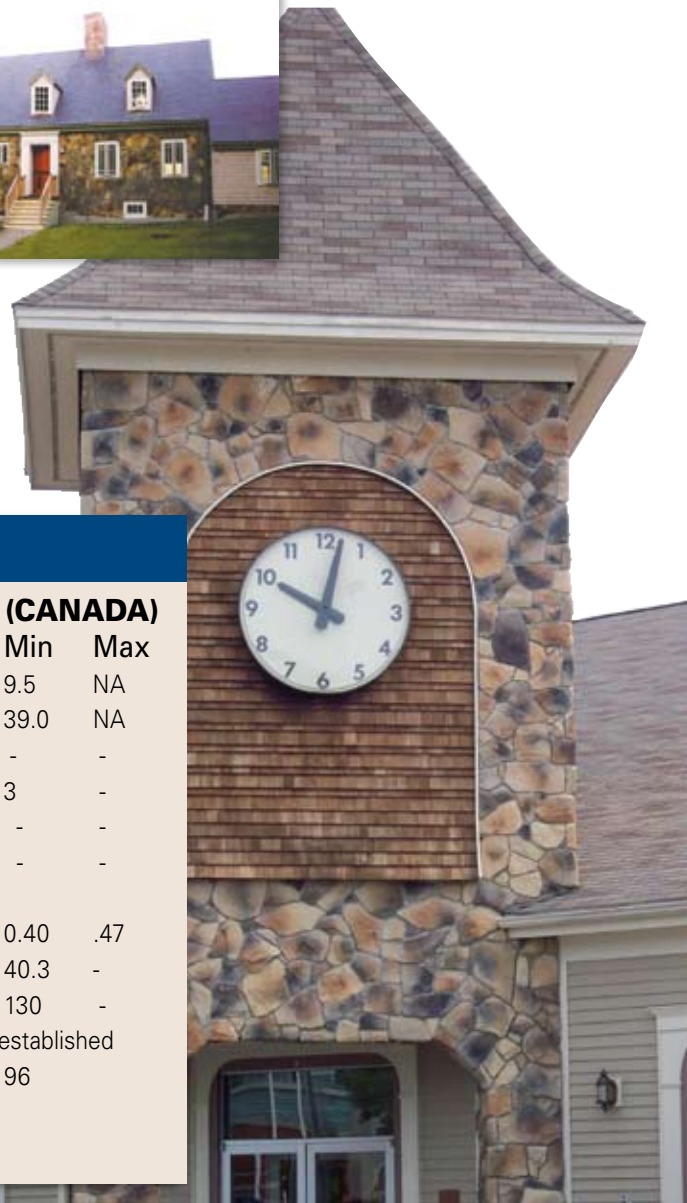
Mortar Deflection and Ventilation System

Mortairvent® is a two-ply mortar deflection & ventilation system that has been specifically designed for use with manufactured stone, stucco, EIFS and brick.

Manufactured stone is an extremely popular exterior covering because it requires very little maintenance. Despite the considerable durability of manufactured stone and the craftsmanship of the experts who install it, hairline cracks frequently form in the mortar joints. These cracks are especially common in parts of the country that experience frequent freeze /thaw weather patterns. These hairline cracks allow wind-driven rain to penetrate the mortar and collect in the wooden walls beneath. Once the moisture gets in, it has nowhere to go, thus creating the perfect environment for toxic mold growth.

The **Mortairvent®** system creates a ventilation cavity between the vapor barrier and exterior wall. The blue polymer core mesh creates the airspace, while the filter fabric blocks mortar droppings from seeping into this newly formed cavity, yet still allowing moisture to pass through. This combination of drainage and ventilation eliminates the threat of toxic mold.

Roll Size: 6mm-39" x 61.5' 10mm-39" x 40'



PRODUCT SPECIFICATIONS

	ASTM	6MM (US)			10MM (CANADA)		
		Avg.	Min	Max	Avg.	Min	Max
Core Weight (oz/sqy)	D-5261	7.0	6.6	NA	10.0	9.5	NA
Core Width (in)	D-3775	39.4	39.0	NA	39.4	39.0	NA
Fabric Weight (gr/sqm)	D-5261	100	-	-	100	-	-
Fabric Overlap (in)		4	3	-	4	3	-
Fabric Tensile MD (lbs/in)	D-6818	37	-	-	37	-	-
Fabric Tensile XMD (lbs/in)	D-6818	31	-	-	31	-	-
Fabric Thickness	D-6525	0.02			0.02		
Composite Thickness (in)	D-6525	0.27	0.26	.28	0.43	0.40	.47
Roll Length (ft)		NA	61.5	-	NA	40.3	-
Roll Area (sqf)		NA	200	-	NA	130	-
Compression Strength		To be established			To be established		
Free Volume(%)	Calculated	-	96		-	96	
Core Thickness (in)	Calculated	.25			.41		

Available to meet Canadian 10mm Rainscreen code requirements.

MORTAR BREAK® & MORTAR BREAK II®

Over 13 years ago, Advanced Building Products saw the need for a less labor intensive way to keep head joints free from mortar droppings. With this thought in mind, we introduced the Mortar Break® system. Since its inception, Mortar Break® has been the cost efficient way to keep head joints free from mortar droppings, while saving significant labor costs during the installation phase. A few years ago the Mortar Break® line was completely re-engineered and is now made from recycled materials. This unique and proven effective mortar deflection device qualifies for L.E.E.D. rating system credits.

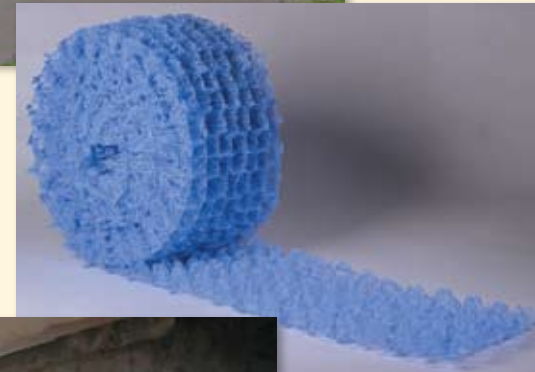
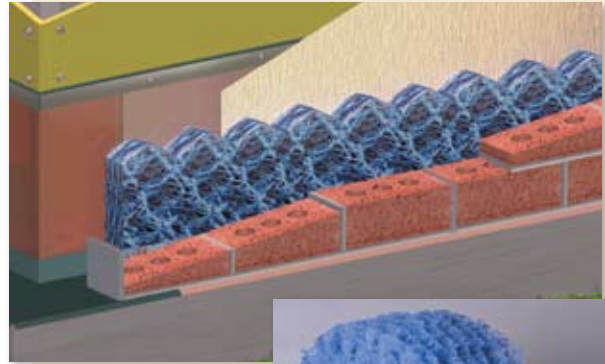
BASIC USE:

- For use at all flashing locations.
- The polymer core geomatrix dimpled design allows mortar to break up on multiple levels allowing moisture to seep down through any mortar droppings and out the cell vents placed in the head joints.
- Mortar Break, used with properly installed flashing and weep systems along with good mortar applying techniques, will ensure the performance of a well designed masonry wall.

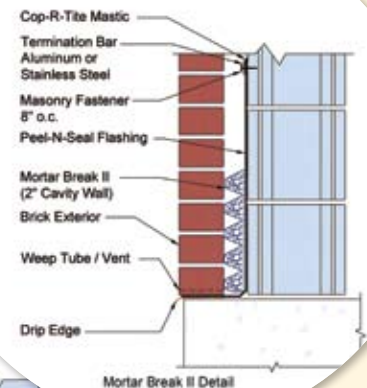
BENEFITS:

- Breaks up and deflects mortar droppings away from weep holes.
- Allows moisture in the cavity to flow down through the geomatrix design and out through Mortar Maze Weep Vents.
- Easy and economical to install (up to 50% labor savings over conventional methods.)
- Narrower dimpled design does not allow mortar droppings to bridge the cavity.

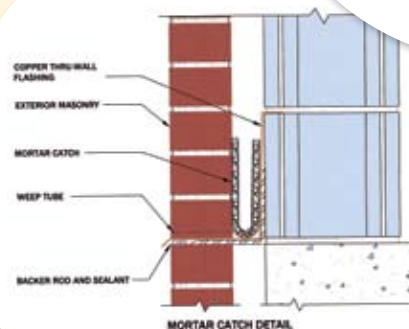
	Mortar Break®	Mortar Break II®	Mortar Catch
Thickness	.80"	1.5"	.40"
Roll Dimensions	10" x 50' 13" x 50' 16" x 50'	10" x 35'	10" x 100' 20" x 100'
Rolls Per Box	4 3 2	4	4 2
Recommended Cavity	1" Cavity	2" Cavity	Over 2"



Pictured above is a wall failure due to excessive mortar build up in a cavity wall.



Mortar Break II Detail



MORTAR CATCH DETAIL



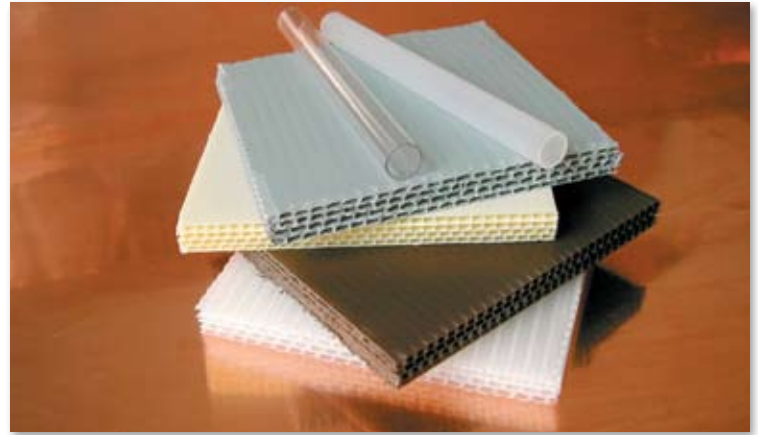
MORTAR MAZE CELL VENTS

Mortar Maze Cell Vents ensure positive drainage in all cavity wall construction. Made from durable polypropylene, Mortar Maze Cell Vents are available in a range of colors to match the surrounding mortar.

Size: 3/8" x 2-1/2" x 3/8" Standard
3/8" x 3-1/2" x 3-1/2" Jumbo

Colors: Gray, Clear, Tan, Brown

Also available: Weep Tubes, Weep Tubes w/ wicks and Weep Tubes w/ wicks and screen.

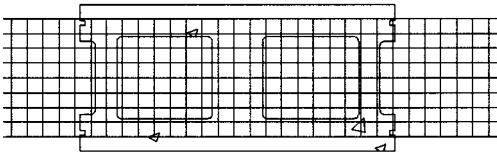


GROUT CATCH

Grout Catch is a strong, lightweight, and economical polypropylene mesh screen that prevents mortar overflow and seepage from designated CMU block cores. The mesh design inherently strengthens the bonding alliance in the mortar joint and also allows for greater bonding of the masonry anchor in hollow wall construction. UV stabilizers protect against exposure and subsequent deterioration.



Available in 100' rolls for 8", 10" and 12" CMU block.



COP-R-TITE Mastic

Cop-R-Tite was developed to ensure the proper sealing characteristics of copper laminated flashings. Cop-R-Tite mastic is manufactured to a trowel grade consistency which will provide a durable coating with excellent adhesion qualities. This product is specifically formulated to be used with all of Advanced Building Products' laminated copper flashings.



Size: 5 gallon pails or 30 oz. tubes
(20 tubes per case)



ADVANCED
 Building Products Inc.

800-252-2306 • [F] 207-490-2998
 E-mail: info@advancedflashing.com

