

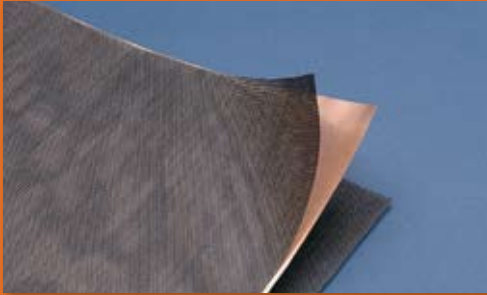


ADVANCED
Building Products Inc.

**For permanent
moisture protection
one name stands out**

2010

advancedflashing.com



Permanent Waterproofing Solutions

For four decades, the people at Advanced Building Products have been designing, manufacturing and marketing masonry flashing products for permanent moisture protection. With in-house and field technicians at your service, and an international network of distribution, we're here to provide both commercial and residential projects everything needed for moisture management and wall ventilation. Our complete inventory of commercial and residential flashings ensures 24-hour shipments of everything necessary to make masonry walls manage water migration effectively.

With today's emphasis on protecting the environment, you should note that at Advanced Building Products, we use recycled materials in all our copper flashing products as well as in many of our masonry accessories. LEEDs certification credits for many of our products are part of the overall commitment we make to both quality and the environment.

Let the professionals at Advanced Building Products be your personal consultants for moisture management and wall ventilation on your next project.

2010 Sweet's Catalog

Geotextiles 3-6 Mortar Deflections, Rainscreens and Roof Ventilation

Sustainable Flashings 7-11

Residential 12

Geotextiles 13 Erosion Control

Accessories 14

LEED - recycled products qualifying for LEED Credits



Geotextiles

Mortairvent®

The distinctive look and durability of brick, stone, and stucco cladding systems have made them extremely popular in recent years. However, they're not waterproof. Moisture will find its way into these wall systems by way of hairline cracks in the mortar joints, broken sealant joints, splashing from horizontal surfaces, such as the ground, and projecting horizontal surfaces, such as windowsills. Once this moisture penetrates the outer wall surface, it will become trapped in the wall system with nowhere to escape, creating the perfect environment for toxic mold growth. That's why Advanced Building Products has created Mortairvent®, a two-ply mortar deflection and ventilation system specifically designed for use with manufactured stone, stucco, EIFS, and brick applications.

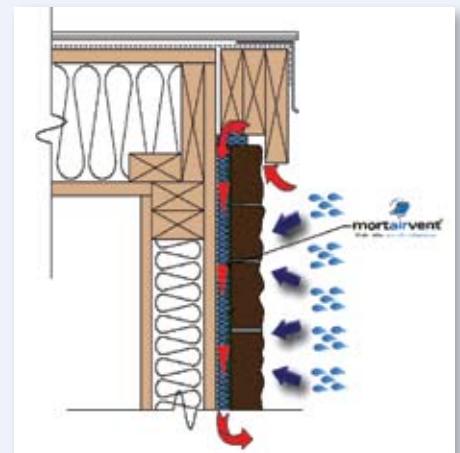
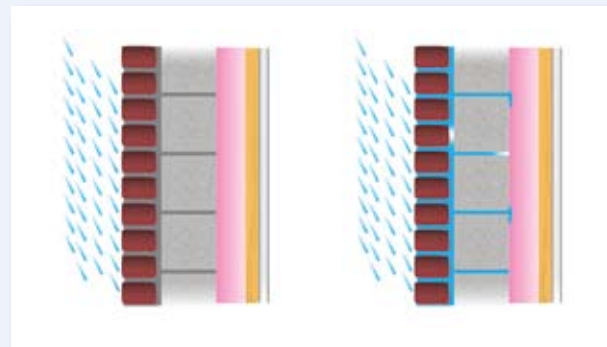
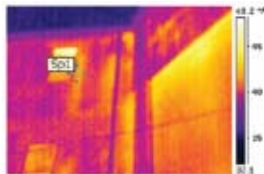
Why Mortairvent®?

Our innovative rainscreen technology equalizes the air-pressure within the wall system by creating a ventilation cavity between the weather resistant barrier (WRB) and the exterior wall. The polymer-core mesh creates the airspace while the filter fabric blocks mortar from seeping into the newly formed cavity while still allowing the moisture to drain, not remain, in the wall system. The constant draining and convective fashion ventilation greatly reduces the threat of toxic mold for generations to come.

These moisture issues are more common in areas with frequent freeze-thaw cycles that allow wind-driven rain to penetrate the mortar and collect in the wall. They are also found in areas with low rainfall and high humidity.

Results From Moisture Infiltration

1. Exterior surfaces such as stucco and EIFS will crack and peel unless damaged substrates are repaired. Moisture trapped behind manufactured stone could dislodge the stone due to various freeze thaw cycles.
2. Structural damage will take affect, which will cause an unsafe environment to work and live in.
3. Mold, mildew and rotting will begin to take place. Wet wood and gypsum products create a food source for mold to thrive in. This will eventually lead to Sick Building Syndrome.



	US	Canada
Core Material	Nylon	Polypropylene
Thickness	.25 inches	10mm
Width (less flap)	39 inches	39 inches
Width (with flap)	43 inches	43 inches
Length	61.5 feet	40 feet
Coverage Area	200 square feet	130 square feet

The Importance of Rainscreen Technology

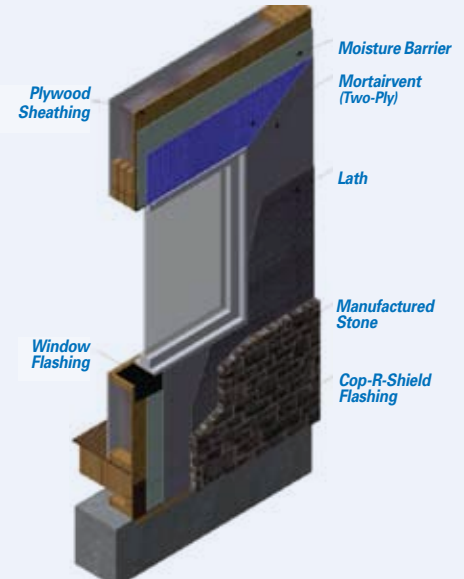
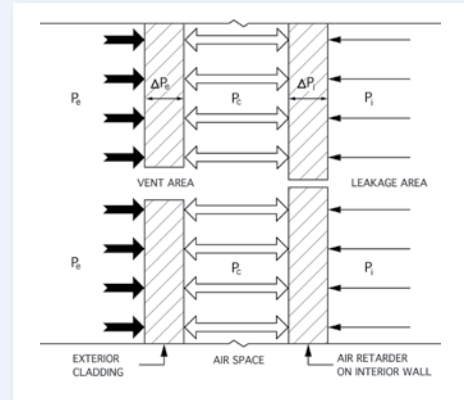
What is a rainscreen? A rainscreen is a pressure-equalized airspace between the structural envelope and the exterior cladding that promotes drainage of moisture from the wall system. Rainscreens were designed to allow the moisture to “drain not remain”. The air pressure difference across the exterior cladding is a significant force causing the infiltration of air and water on windward facades. The equalization of this pressure neutralizes the forces that draw water into the assembly.

Manufactured at our Geotextile facility, we recently re-designed Mortairvent® to be manufactured from 40% recycled content qualifying it for LEED credits. We have also increased the compression strength of Mortairvent® allowing for better ventilation and drainage compared to others on the market.

Mortairvent® Installation Instructions

1. Install sidewall-sheathing material over the studs.
 2. Apply a WRB (water resistive barrier) over the sheathing. Some building codes require two layers of WRB.
 3. Install Mortairvent® after the windows and doors are properly installed and flashed.
 4. Wrap the Mortairvent® by unrolling the product left to right and fasten with corrosion-resistant fasteners. Start at the base of the wall and work your way up.
 5. Overlap each roll shingle style with the fabric side facing out. Make sure the 4" fabric flap is on the bottom of each roll so it can overlap the preceding roll shingle style. Do not overlap the rolls. Butt new rolls together when necessary.
 6. Attach metal lath per the recommendation of the lath manufacturer over the Mortairvent® product.
 7. Apply scratch coat.
- When installing Mortairvent® at corner locations, either cut the Mortairvent® at the corner, or butt up against corner trim boards.

Note: The air space in a rainscreen system needs to be a minimum of 3mm to provide the necessary capillary break. Anything less than 3-millimeters allows trapped moisture the ability to bridge the airspace. Advanced Building Products manufactures Mortairvent® in both a 6mm or 10mm thickness to assure proper drainage for all applications.



PRODUCT SPECIFICATIONS

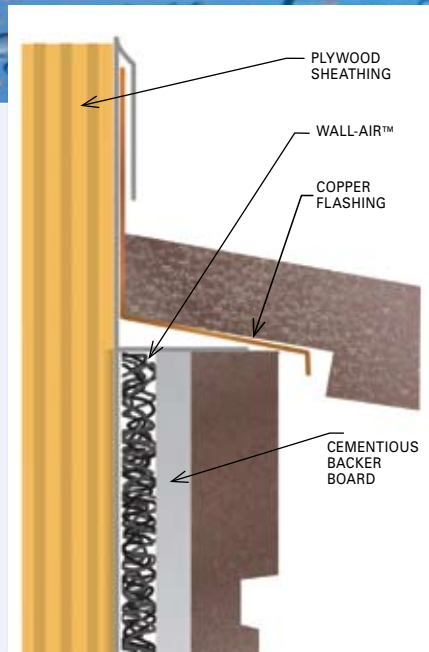
	ASTM	6MM (US)			10MM (CANADA)		
		Avg.	Min	Max	Avg.	Min	Max
Core Weight (oz/sqy)	D-5261	7.0	6.6	NA	10.0	9.5	NA
Core Width (in)	D-3775	39.4	39.0	NA	39.4	39.0	NA
Fabric Weight (gr/sqm)	D-5261	50	-	-	50	-	-
Fabric Overlap (in)		4	3	-	4	3	-
Fabric Tensile MD (lbs/in)	D-6818	37	-	-	37	-	-
Fabric Tensile XMD (lbs/in)	D-6818	31	-	-	31	-	-
Fabric Thickness	D-6525	0.02			0.02		
Composite Thickness (in)	D-6525	0.27	0.26	.28	0.43	0.40	.47
Roll Length (ft)		NA	61.5	-	NA	40.3	-
Roll Area (sqft)		NA	200	-	NA	130	-
Compression Strength		To be established			To be established		
Free Volume(%)	Calculated	-	96		-	96	
Core Thickness (in)	Calculated	.25			.41		

Available to meet Canadian 10mm Rainscreen code requirements.

Wall-Air™

Wall-Air is our recommended rainscreen system used when building with manufactured stone applications utilizing an exterior rated cementitious backer board. The difference between Wall-Air™ and Mortairvent® is the absence of a filter fabric. The Wall-Air™ is placed between the weather resistant barrier and exterior cementitious board to allow proper drainage and ventilation. Since the Wall-Air is behind the backer board a fabric is not necessary.

Wall-Air™ is available in either a 6mm or 10mm thickness.



Foundation Sill Screed

Our Weep Screed is manufactured from PVC and used at the plate line or stem wall to provide a stucco stop. Often used with our Mortairvent® and Wall-Air™, Weep Screed is designed to allow moisture to migrate down and shed away from the wall.

Colors: Gray, White, Sand Stone

Size: 3" x 10' with a 3/4" flange

Packaging: 35 pieces per box



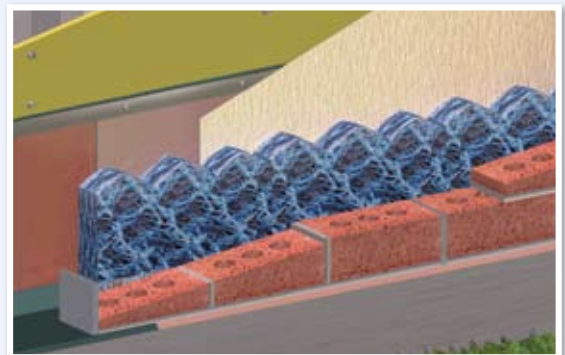
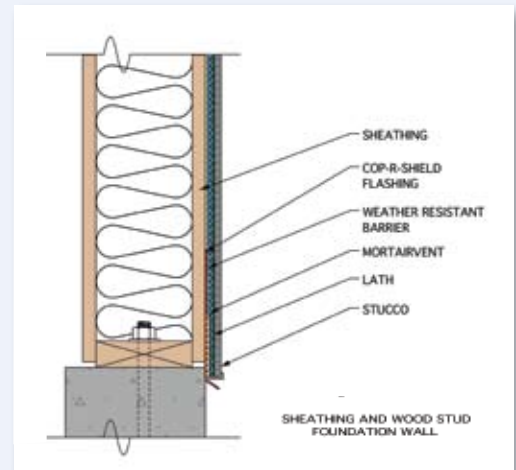
Mortar Break®

The Complete Mortar Deflection and Air Filtration System

Over 20 years ago Advanced Building Products saw the need for a less labor intensive way to keep head joints free from mortar droppings. With this thought in mind we introduced our Mortar Break® system. Since its inception, Mortar Break® has been the cost efficient way to keep the cavity wall and head joints free from mortar droppings, while saving significant labor costs during the installation phase. Made from recycled materials, this unique and proven effective mortar deflection device qualifies for LEED rating system credits.

Basic Use:

- For use at all flashing locations, such as cavity, composite, single wythe and veneer applications (see detail).
- The polymer core geomatrix design allows moisture to seep down through any mortar droppings and weep out of the wall through the cell vents or weep holes.



- Mortar Break®, used with properly installed flashing and weep systems, along with good mortar applying techniques, will ensure the performance of a well designed masonry wall. The Brick Institute of America recommends the thru-wall flashing extend up the wall above the Mortar Break.

Mortar Break II®

The Complete Mortar Deflection and Air Filtration System For 2-inch Cavity Walls

Composition:

Mortar Break II® is 1.5" thick and made from a high-density polypropylene mesh. Mortar Break II® is packaged 4 rolls/box and is available in 10" x 35' rolls.

Installation:

Install Mortar Break II® by placing the material at all flashing locations. Mechanical fasteners are not required.

The Benefits:

- Qualifies for LEED rating system credits
- Superb mortar deflection performance
- Industry leading air infiltration results
- Labor & material savings

How It Works:

- Breaks up & deflects mortar droppings away from weep holes.
- Allows moisture in the cavity to flow down through the geomatrix design and exit through Mortar Maze® Weep Vents.
- Easy and economical to install (up to 50% labor savings over conventional methods).
- The narrow design avoids any possible bridging of mortar across the cavity.



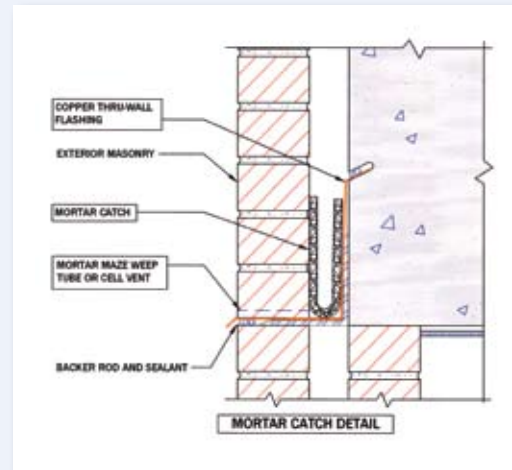
A costly restoration job due to omission of mortar deflection.

Mortar Catch®

Mortar Catch® is used at all flashing locations where wide cavity construction is required. The polymer core geomatrix design, when shaped in a "U" configuration, fills the cavity and allows moisture to drain freely down and out of the wall. Mortar Catch® used with quality flashing, weep vents and good mortar applying techniques will ensure the performance of a properly designed masonry wall.

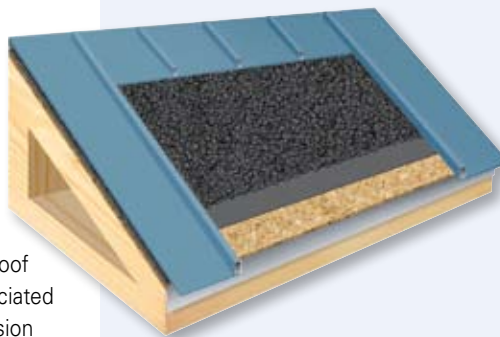
Composition: Mortar Catch® is a polymer core geomatrix composed of nylon strands woven into a .40" thick mesh. It is resistant to acid and alkali present in fresh mortar mix.

Size: Mortar Catch® is available in either a 10" or 20" x 100' long roll.



R-Vent™

R-Vent™ is an entangled mat metal roof underlayment that creates an airspace/cavity perfect for promoting airflow in all directions between the metal panels and above the sheathing. Using this thin profile, flexible matting prolongs the life of the roof structure and membrane by reducing the adverse effects associated with moisture/water damage such as mold, mildew, and corrosion of metal panels. R-Vent™ is extremely flexible and conforms to any contoured surface, making it ideal for large commercial and institutional metal roof installations.



Benefits:

- Creates an open structure for ventilation
- Prolongs life of membrane and roof structure
- Reduces sound transmission through panels
- Lightweight and easy for installers to handle
- Bends and conforms to any type of contoured roof
- Contributes to LEED points

Sustainable Flashings

Copper Sealtite 2000®

Non-Asphaltic Thru-Wall Flashing

In 1999, our President and CEO, Richard Lolley, developed and patented (U.S. Patent # 6,696,141) a process for manufacturing non-asphaltic copper fabric flashing. This flashing would take all the benefits of copper fabric flashing and add the additional benefits of...

- Compatibility with most water based latex sealants on the market.
- Lighter product, which allows us to put more lineal footage on a roll, allowing for fewer lap joints.
- Forms a natural copper drip edge.
- LEED credits.

Description:

Copper Sealtite 2000® is manufactured in a 2, 3 or 5 oz. The copper is bonded on both sides to glass fabric with a non-asphaltic adhesive.

Features:

Copper Sealtite 2000® is a permanent, premium quality laminated thru-wall flashing consisting of five (5) layers of time proven sustainable waterproofing materials combined under heat and pressure into a single sheet. It is flexible and is easily formed by hand at the jobsite.

Copper Fabric Flashing

Asphalt coated copper flashings have been used for approximately 100 years. The longevity of copper has proven to withstand the test of time. All copper flashings manufactured by Advanced Building Products come with a **life of the wall warranty**.

Description:

Copper Fabric is manufactured from a full sheet of 2, 3, 5 or 7 oz. copper bonded on both sides to glass fabric with an asphaltic coating.

Features:

Copper Fabric is a permanent, premium quality laminated thru-wall flashing consisting of five (5) layers of time proven waterproofing materials combined under heat and pressure into a single sheet. It is flexible and is easily formed by hand at the jobsite. The asphalt coating protects the copper during installation and acts as a bonding agent when installed within the mortar joint.

At right: Three recommended ways to attach thru-wall flashing to the backer wall.

ADVANCED TECHNOLOGY for copper flashings

Standard Sizes:

- 12" x 60'
- 16" x 60'
- 18" x 60'
- 20" x 60'
- 24" x 60'
- 32" x 60'
- 36" x 60'

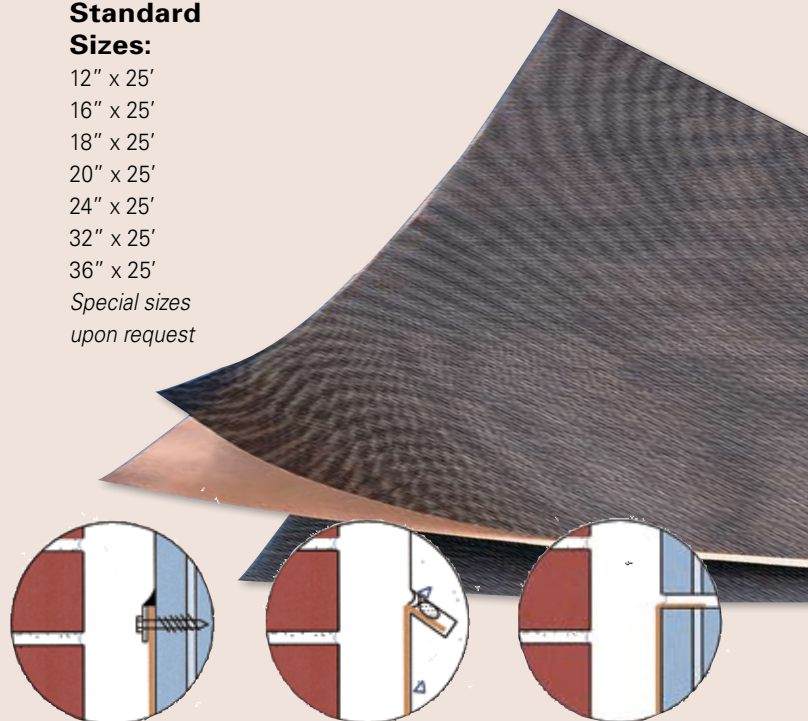
Special sizes upon request



Standard Sizes:

- 12" x 25'
- 16" x 25'
- 18" x 25'
- 20" x 25'
- 24" x 25'
- 32" x 25'
- 36" x 25'

Special sizes upon request



Flashing secured with a termination bar

Flashing secured in a masonry reglet

Flashing secured in a masonry joint

Cop-R-Cote LEED Points

Description:

Cop-R-Cote is manufactured in a 2, 3, 5 or 7 oz. Our copper is bonded on both sides with a special plasticized asphalt compound.

Features:

Cop-R-Cote is a permanent, premium quality laminated thru-wall flashing consisting of three (3) layers of time proven waterproofing materials combined under heat and pressure into a single sheet. It is flexible and is easily formed by hand at the jobsite. The asphalt coating of Cop-R-Cote allows for contact with dissimilar metals.

Cop-R-Kraft LEED Points

Description:

Cop-R-Kraft is manufactured in a 2 or 3oz. Our copper is bonded to a layer of waterproofed creped kraft paper and a plasticized asphalt compound.

Features:

Cop-R-Kraft is a permanent, premium quality laminated thru-wall flashing consisting of four (4) layers of time proven waterproofing materials bonded under heat and pressure into a single sheet. It is flexible and is easily formed by hand at the jobsite. Our 3oz. Cop-R-Kraft meets GSA, FHA and Corps of Engineers specifications.

Cop-R-Kraft Duplex LEED Points

Description:

Cop-R-Kraft Duplex is manufactured in a 2, 3 or 5 oz. Our copper is bonded between two layers of waterproofed creped kraft paper with a plasticized asphalt compound.

Features:

Cop-R-Kraft Duplex is a permanent, premium quality laminated thru-wall flashing consisting of six (6) layers of time proven waterproofing materials bonded under heat and pressure into a single sheet. It is flexible and is easily formed by hand at the jobsite.

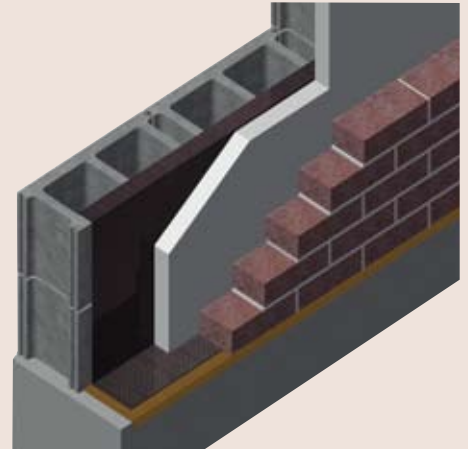
Cop-R-Corners™ LEED Points

Advanced Building Products offers pre-fabricated copper corner and end dam assemblies that make flashing masonry corners an easy one-step operation. These corners are available as inside and outside sets as well as individual pieces that are adjustable for varying field conditions with generous flange widths to easily fit different cavity wall applications. Asphalt coating at seams and flanges results in better mortar bonding and watertight peace of mind. Cop-R-Corners™ are constructed from 5oz. copper that will last the life of the structure. Cop-R-Corners™ allow masons to make leak proof corners in a fraction of the time and at a fraction of the cost.

Standard Sizes:

12" x 25'
16" x 25'
18" x 25'
20" x 25'
24" x 25'
32" x 25'
36" x 25'

Special sizes upon request



Standard Sizes:

12" x 60'
16" x 60'
18" x 60'
20" x 60'
24" x 60'
32" x 60'
36" x 60'

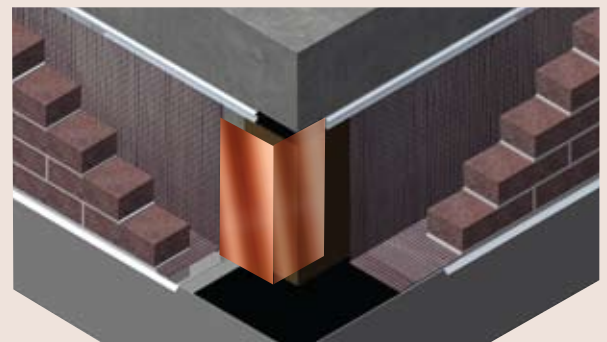
Special sizes upon request



Standard Sizes:

12" x 60'
16" x 60'
18" x 60'
20" x 60'
24" x 60'
32" x 60'
36" x 60'

Special sizes upon request



Strip-N-Flash™

formerly Peel-N-Seal

Self-Adhering Cavity Wall Membrane

Description:

Strip-N-Flash™ (formerly Peel-N-Seal) is a 40 mil. self-adhering rubberized asphalt membrane laminated to a high-density polyethylene film. A siliconized release liner prevents the product from sticking to itself in the roll. The factory-controlled quality assures uniform thickness on the job and the name Strip-N-Flash™ assures an excellent water barrier.

Typical Use:

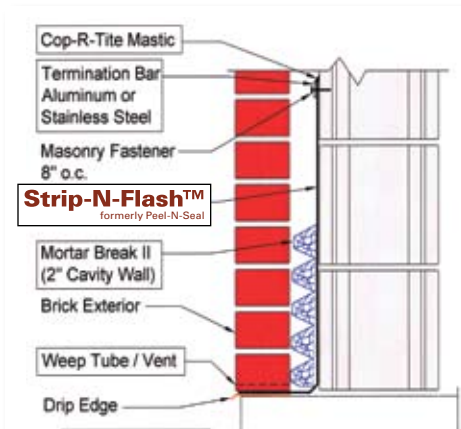
Strip-N-Flash™ thru-wall membrane is designed to provide moisture protection in a cavity wall application. Its self-adhesive nature allows easy installation on concrete, masonry, gypsum, steel and wood substrates.

Advantages:

- The inherent durability of the extra strength 8 mil. cross-laminated polyethylene film resists mechanical damage and ensures the integrity of the rubberized asphalt waterproofing membrane during subsequent wall construction.
- Strip-N-Flash™ provides a waterproof barrier at flashing areas to prevent wall assembly leaks.
- Strip-N-Flash™ is fully adhered to the substrate to prevent moisture migration behind the flashing.
- The unique rubberized nature of Strip-N-Flash seals around fasteners.

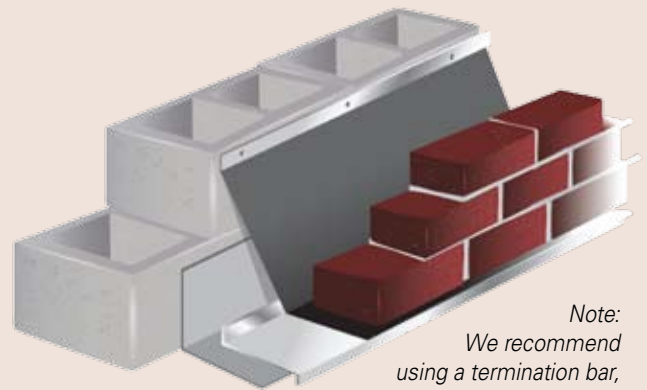
Limitations:

- Not recommended in areas where membrane will be subject to continuous sunlight or temperatures in excess of 180°F.
- Do not apply primer or membrane to frozen substrates. Best results are obtained when membrane is installed at temperatures above 40°F.
- Do not apply primer or membrane to damp or contaminated surfaces.



Packing:

- 12" x 75'
- 16" x 75'
- 18" x 75'
- 24" x 75'
- 36" x 75'



Note:
We recommend using a termination bar, primer and drip edge when installing any self-adhering flashing.

Technical Data

Property	ASTM	Results
Thickness		40 mils
Tensile Strength	D-412	1200 psi. min.
Elongation*	D-412	200% min.
Pliability	D-146	pass @ -25% ¼" mandrel
Peel Adhesion	D-903	5-lbs./in.. min.
Puncture Resistance	E-154	40 lbs. min.

* % of elongation to ultimate failure of rubberized asphalt membrane

Sealtite Sealant

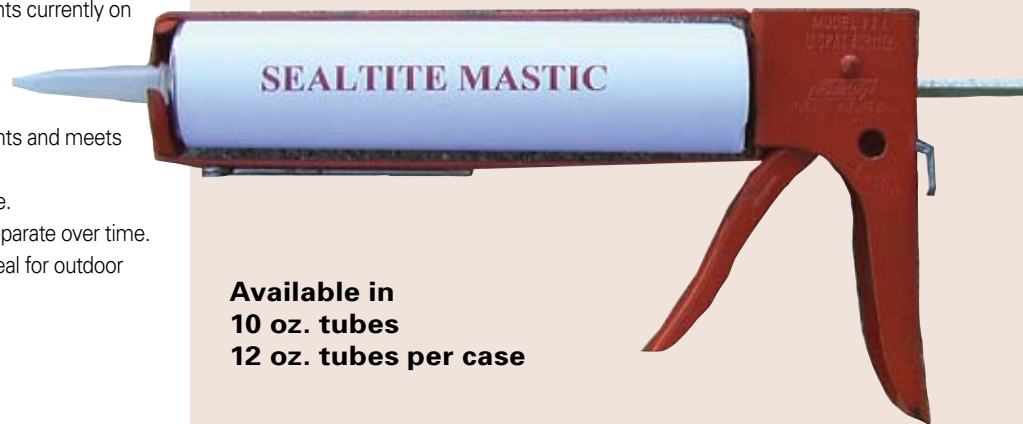
Description:

Sealtite Sealant is a high performance acrylic urethane sealant designed for use with Copper Sealtite 2000®. The acrylic urethane formula has better adhesion, flexibility and durability compared to other sealants currently on the market.

Features:

- Ultra low VOC content, which qualifies for LEED points and meets stringent State and Federal VOC regulations.
- Water-based sealant is non-flammable and odor free.
- Permanently flexible and will not harden, crack or separate over time.
- Mold & Mildew Resistant makes Sealtite Sealant ideal for outdoor and high humidity application.

When using Sealtite Sealant we recommend the external temperature be 40° or higher. Do not use when rain or freezing conditions are expected within 24 hours of application.



Available in
10 oz. tubes
12 oz. tubes per case

Cop-R-Tite Mastic

Asphaltic Based Flashing Mastic

Description:

This unique fibrated mastic was developed to insure the proper sealing characteristics of copper laminated flashings. Cop-R-Tite Flashing Mastic is a compounded composition of asphalt, mineral stabilizers, and interfibe. It is manufactured to a trowel grade consistency, which will provide a durable, elastic coating highly resistant to weathering while providing excellent adhesion properties. Cop-R-Tite Flashing Mastic performs well over a wide range of temperature and weather conditions. It complies with all requirements of Federal Specifications SS-C-153, Type 1 and ASTM D2822, Type 1 and SSPC No. 12.



Physical Properties:

- Boiling Point 650°F
- Flash point and method 110°F
- Solubility in water None
- Appearance Black Paste

Available in 5-gallon pails and 30 oz. tubes

Miracle Cement

PVC Membrane Cement

Description:

A tacky, fast-grabbing, semi-pressure-sensitive rubber/resin base adhesive designed for bonding Advanced's Moistseal to itself or to metal, wood or concrete as well as other porous and non-porous surfaces.

Features:

Produces a strong bond between Moistseal and other surfaces. It is also excellent for bonding other materials such as Tedlar, neoprene, asbestos and foamed polystyrene. Unlike asphalt mastics that cause plasticizer migration when used with PVC, Miracle Cement is compatible with all PVC and polyethylene materials.

Physical Properties:

- Viscosity Approx. 30,000 cps.
- Base Rubber/Resin
- Solvent (dilution) Hexane
- (cleanup) Naphtha
- Tack Life Semi-pressure sensitive
- % Solids 62-68
- Flashpoint -6° F.
- Storage over 1 year
- Coverage per gallon Approx. 100 sq. ft.
- Containers 5 Gallon Pails

Strip-N-Flash™ Green

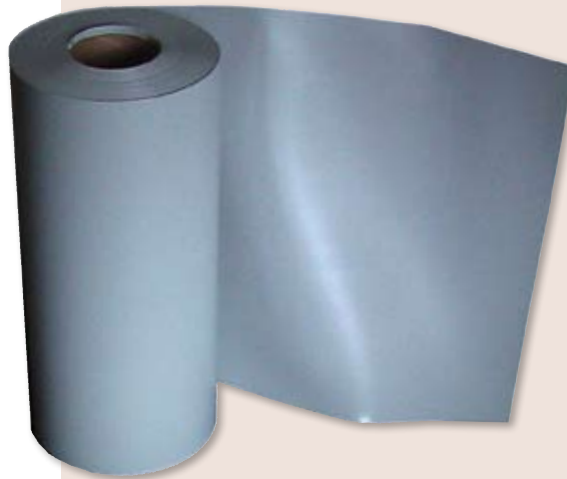
formerly Gray Seal

Description:

Strip-N-Flash™ Green (formerly Gray Seal) is an improved non-asphaltic economical 40 mil. UV resistant flashing suitable for residential and commercial applications.

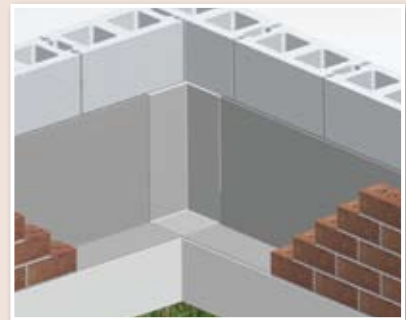
The Strip-N-Flash™ Green advantage...

- Self-adhering.
- Durable, affordable and easy to install.
- Will not drool in warm climates.
- Will not become brittle in cold climates.
- UV resistant.
- Compatible with all contact cements.
- Extreme puncture and tear resistance.
- Resistant to acids and alkali in fresh mortar.
- Mold and Mildew resistant.
- Made from recycled material.



Standard Sizes:

12" x 50'
16" x 50'
18" x 50'
20" x 50'
24" x 50'
32" x 50'
36" x 50'



Primer

Low VOC Waterproofing Primer

Description:

Primer Seal is a high quality, rubberized, low VOC primer, formulated for the professional waterproofing contractor.

Typical Uses:

This quick dry, high-tack primer provides maximum bond to asphalt, concrete, masonry and metal surfaces.

Application:

Apply with a long nap roller or spray equipment at the rate of 250 to 300 square feet per gallon. Allow to cure until the surface is tacky, but will not transfer when touched. Primer should be allowed to dry a minimum of 1 hour, and a maximum of 8 hours. Do not thin with organic solvents.

Safety:

For safety, health, and handling information contact Advanced Building Products at 1-800-252-2306 for Material Safety Data Sheets (MSDS).

Available in 5-gallon pails

Technical Data*

Property	Results
Weight per Gallon	7.53 lbs
Solids Content	38% by weight
Tack Free Time	30 min. @ 75°F
VOC	Less than 450 grams/litre
Flash Point	<68°F
Packaging	5 Gallon pails

* All values stated as nominal at time of manufacture.

Residential

Cop-R-Shield

Residential Flashing

Description:

Advanced Building Products is proud to manufacture Cop-R-Shield flashing for residential wood frame construction. Cop-R-Shield has worked extremely well as a termite shield and thru-wall flashing on wood framed construction. New preservatives such as Alkaline Copper Quaternary (ACQ) used on pressure treated lumber create a compatibility concern between aluminum flashing and treated lumber. Using Cop-R-Shield solves all compatibility concerns with dissimilar materials.

Cop-R-Shield PC

Residential Flashing

Description:

Cop-R-Shield PC is our non-asphaltic copper flashing ideal for deck construction and termite shield protection. Advanced Building Products uses a durable poly laminated to either a 2 oz. or 3 oz. sheet of copper. The copper and poly technology gives our flashing superior tensile strength; puncture resistance, and self-sealing capabilities.

Cop-R-Shield PC should be installed with the copper side facing the plywood sheathing and the poly facing out.

Benefits:

- UV resistant for the life of the structure
- Used on deck applications, window sills and other openings
- Easy to form on-site
- Two layers of sealing protection
- Compatible with all ACQ pressure treated wood
- Perma-Lam technology allows protection from corrosion

Moistseal

Description:

Moistseal is a polyvinyl chloride sheet available in 10, 20, 30, and 60 mils. Recommended for concealed applications only, Moistseal is an excellent waterproofing membrane. It will show no cracking or flaking when bent through 180 degrees over a 1/32" mandrel and then bent at the same point over the same size mandrel in the opposite direction through 360 degrees. The material conforms to ASTM Standard D-822. Strict quality control assures full weight and uniform thickness.



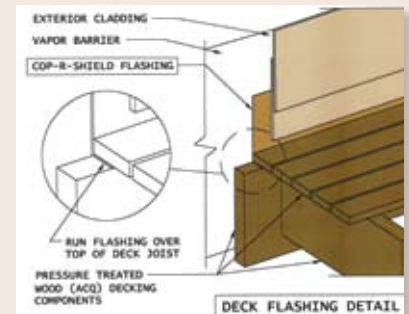
Standard Sizes:

- 8" x 20'
- 8" x 60'
- 10" x 20'
- 10" x 60'
- 12" x 20'
- 12" x 60'

Special sizes upon request

Benefits:

- UV resistant for the life of the structure
- Used on deck applications, window sills and other openings
- Easy to form on-site
- Two layers of self-sealing protection
- Compatible with all ACQ pressure treated wood



Standard Sizes:

- 8" x 20'
- 8" x 60'
- 10" x 20'
- 10" x 60'
- 12" x 20'
- 12" x 60'

Special sizes upon request

Features:

Cop-R-Shield PC is a permanent, premium quality laminated thru-wall flashing consisting of three (3) layers of time proven waterproofing materials combined under heat and pressure into a single sheet. It is flexible and is easily formed by hand at the jobsite.



Note: We do not recommend the use of Moistseal as a long-term thru-wall flashing.

Erosion Control

Ground Guard® with Fertil-Fabric

Description:

Ground Guard® with Fertil-Fabric is a ground breaking, nutrient packed 'manure' mat used to naturally fertilize plants for optimum growth and survival. The flexible, open structure makes a perfect environment for dirt and plant roots to embed and entangle — permanently securing plants in place. Ground Guard® with Fertil-Fabric is made of 100% recycled nylon bonded to a **100% recycled cow manure** "fabric". The fabric has been processed to kill bacteria but leave the nutrients intact to promote early and healthy plant growth. No smell!



Applications:

- Channels & slopes
- Green roofs / roof gardens
- Sloped or irregular shaped roofs
- Eco-habitats

Benefits:

- Natural fertilizer — safe for the environment
- Natural nutrients improve plant growth and survival
- Permanently secures plant roots
- Plants can be grown directly in matting
- 100% recycled product contributes to LEED points

Ground Guard® RR .40 Root Reinforcement

Description:

Made of 100% recycled nylon, Ground Guard® RR provides an effective and eco-friendly choice for securing plant roots in all types of erosion prone areas. The tough black nylon mesh has an open structure which makes a perfect environment for dirt and plants to embed, entangle — permanently securing plant roots in place. Once the root system is established, you have a permanent solution for anchoring vegetation. Ground Guard® RR is a natural choice for any erosion problem requiring extra soil / root stability.



Applications:

- Channels & slopes
- Green roofs / roof gardens
- Sloped or irregular shaped roofs
- Eco-habitats

Benefits:

- Permanently secures plant roots
- Enhances plant growth and survival
- Lightweight and easy to handle rolls
- Open structure is easy to soil fill
- 100% recycled nylon contributes to LEED points

Ground Guard® VM .40 F / Pre-vegetated Mat

Description:

Ground Guard® VM is an eco-friendly erosion control product designed for use in any erosion prone area requiring extra soil / root stability. The flexible, open structure makes a perfect environment for dirt and plant roots to embed and entangle while the filter fabric helps hold soil in place. Once the root system is established, you have a permanent solution for anchoring vegetation. Ground Guard® VM is made of 100% recycled nylon bonded to a polyester fabric. It is a safe choice for a protected, natural environment.



Applications:

- Channels & slopes
- Green roofs / roof gardens
- Sloped or irregular shaped roofs
- Eco-habitats

Benefits:

- Permanently secures plant roots
- Enhances plant growth and survival
- Easy to install vertically or horizontally
- Plants can be grown directly in matting
- 100% recycled nylon contributes to LEED points

Accessories

Stainless Steel Termination Bars:

Description:

Stainless Steel Termination Bars are 1" wide x 8' long. Holes are 8" on center

Aluminum Termination Bars:



Description:

Aluminum (Alloy 6063) Termination Bars are 1" wide x 10' long. Holes are 8" on center.

Plastic Termination Bars:

Description:

Plastic Termination Bars are 1" wide x 8' long, with no pre-drilled holes.

Mortar Maze® Cell Vents

Description:

Mortar Maze® Cell Vents ensure positive drainage in all cavity wall construction, while also restricting insects and other debris from entering the head joint. Made from durable polypropylene, Mortar Maze® Cell Vents are available in a range of colors to match the surrounding mortar. Polypropylene tested in conformance with ASTM D2240, D790B, D638, and D1238B.

Mortar Maze® Weep Tubes (with and without wicks)

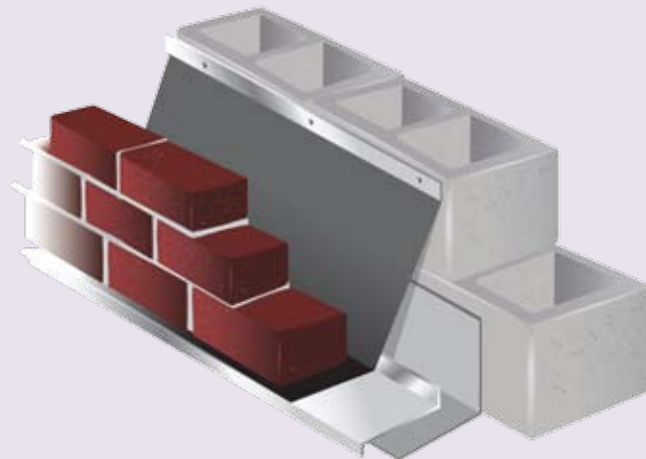
Description:

Mortar Maze® Weep Tubes are now available with or without cotton wicks, or with both cotton wicks and stainless steel screens. Mortar Maze® Weep Tubes are a cost effective drainage device made of durable clear plastic. Placed sixteen inches on center allows for proper moisture drainage. Tubes are 3/8" dia. x 4".

Grout Catch Concrete Block Core Screen



Advanced Building Products offers Advanced Grout Catch, which allows the builder to better control a masonry construction project. Advanced Grout Catch is a strong, lightweight, and economical polypropylene mesh screen that prevents mortar overflow and seepage from designated CMU block cores. The mesh design inherently strengthens the bonding alliance in the mortar joint and also allows for greater bonding of the masonry anchor in hollow wall construction.



Size: Standard: 3/8" x 2-1/2" x 3-3/8"

Jumbo: 3/8" x 3-1/2" x 3-1/2"

Colors: Clear, Tan, Gray or Brown.

Special colors may be available upon request.

Mortar Maze Cell Vents come 200 per box.

• Tubes without wicks are 500 per box.

• Tubes with wicks are 200 per box.

• Tubes with wicks and screens are 200 per box.



Available Sizes:

6" x 100' Roll (for 8" CMU) / 32 Rolls Per Box

8" x 100' Roll (for 10" CMU) / 16 Rolls Per Box

10" x 100' Roll (for 12" CMU) / 16 Rolls Per Box



McGraw Hill
CONSTRUCTION Sweets Network



ADVANCED
Building Products Inc.

800-252-2306 • (F) 207-490-2998
e-mail: info@advancedflashing.com