



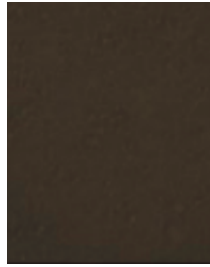
# Liquid Antique

Direct Colors Liquid Colored Antique adds depth and dimension to your stamped or stenciled concrete. Our spray-on product accents and highlights any textured surface creating a multi-toned look on your outdoor patio, driveway or walkways.

- Wide variety of colors
- Use on wet or dry concrete
- No powered release needed and no mess
- Apply Concrete Sealer to protect finished surface



1880



230



500



126



533



653



543



609



680



553



627



1115



1198



1830



5376



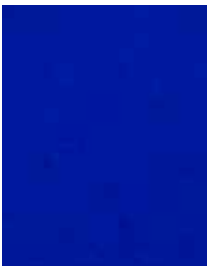
1835



560



649



Blue



1311



Ti02



623

Coverage:  
200-300 sq. ft. per gallon

Application Method:  
Pump Sprayer

Function:  
Accent and highlight textured surfaces



# Liquid Antique Technical Data

## How to Use Direct Colors Liquid Colored Antique

Liquid Colored Antique can be used on dry and acid stained surfaces as a coloring or antiquing agent. On flat surfaces, the pigment will collect where you spray it most heavily. On textured surfaces, the pigment will flow to the lowest part of the impression, adding natural looking highlights. The liquid vehicle evaporates, leaving the pigment to shadow the surface. The surface must then be sealed to maintain the color and placement of the pigment particles.

Direct Colors Liquid Colored Antique can be used to even color in small batch overlays or to correct over-hydration color bleed.

For dry applications as antiquing fluid, or wet application as colored release, Liquid Antique will eliminate clean up costs and mess, decreasing labor and providing contractors with a cost effective tool for all their decorative work.

Standard, powder releases use percentage of pigment load to control the color. This liquid works under the same principles, but the dispersion vehicle, rather than inhibiting the placement of pigment for lighter shades, evaporates to

leave only the pigment. Color shading control is fully in the hands of the applicator. The more an area is saturated with the coloring liquid, the more pigment will be dispersed, allowing the contractor to fully control his color project and provide virtually an infinite range of color depth.

By using separate applications of different colors, unique and personal effects can be created, allowing the contractor to more easily tailor a project to the expectations of the client.

Liquid Colored Antique contains a dispersant to maintain even distribution of pigment particles throughout the mix, but settling will occur. Stir or shake vigorously before pouring into the sprayer, and regularly agitate the mixture to prevent settling in the sprayer.

Coverage rate depends on porosity of the concrete, level of color required and many other factors. Average coverage rate is 1000 to 1500 sq. ft. per five gallons of Liquid Colored Antique.



Contact us to order or for  
more information:

**Direct Colors Inc.**  
430 E. 10th St.

Shawnee, OK 74801  
[info@directcolors.com](mailto:info@directcolors.com)

(405)275-6657  
1-877-255-2656