



One Of The Most Revered Composites
Alpolic® Has Ever Produced.

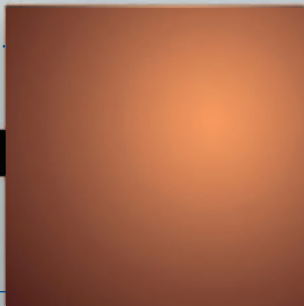
INTRODUCING A JOINT VENTURE WITH

A COMBINATION THAT IS AS BE

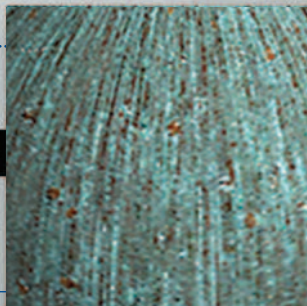


WHEN YOU COMBINE ALPOLIC®'S SPIRIT OF 21ST CENTURY ENGINEERING AND INNOVATION WITH REVERE COPPER COMPANY'S PROUD, 200-YEAR TRADITION OF EXCELLENCE IN SHAPING COPPER AND COPPER-BASED ALLOYS, YOU GET THE HIGHLY INNOVATIVE NATURAL METAL SERIES OF REVERE/ALPOLIC® COPPER COMPOSITE MATERIAL (CCM). BY COMBINING THE BEST FEATURES OF ALPOLIC®'S COMPOSITE PANELS WITH REVERE'S ARCHITECTURAL COPPER, ALPOLIC® AND REVERE HAVE PRODUCED A BOLD NEW WAY FOR ARCHITECTS TO EMPLOY THE BEAUTY AND PRACTICALITY OF COPPER. REVERE/ALPOLIC® COPPER COMPOSITE PANELS OFFER DESIGNERS AND ARCHITECTS THE LOOK AND DURABILITY OF COPPER AT A FRACTION OF THE WEIGHT.

Milled Copper



+



Post Patina Finish

Get The Durability Of

Copper Without The Weight

Revere/ALPOLIC® Copper Composite Material is composed of a thermoplastic core sandwiched between two thin sheets of copper. The Revere/ALPOLIC® panels offer designers, architects and building owners the rigidity of heavy-gauge sheet metal in a lightweight copper composite material. Designed for building, retrofit and roofing applications, the Revere/ALPOLIC® panels feature

such attributes as superior flatness, vibration dampening, durability and ease of fabrication and maintenance.

Copper Has Never

Been So Easy To Fabricate

ALPOLIC® Copper offers the same flatness, rigidity, workability, formability and quality features of standard ALPOLIC® ACM products. Both lightweight and easy to work, Revere/ALPOLIC® Copper 4mm Composite Panels can be cut, bent, curved to a 6" radius, routed, sawed, drilled, and welded to form complex shapes, creating



CERIDIAN BUILDING



NEW ENGLAND BIOLABS

AN INNOVATIVE, WITH REVERE COPPER.

AS BEAUTIFUL AS COPPER IS CLASSIC.



JFK HIGHSCHOOL



WAKE MED NORTH HEALTHPLEX



JFK HIGHSCHOOL

ators could not achieve with solid copper. The Revere/ALPOLIC® CCM has been successfully tested in accordance with ASTM E72-95, "Standard Test Methods of Conducting Strength Tests for Building Construction," Section 12, titled "Transverse Load-Specimen Vertical". Panels were tested with and without stiffeners, and loads were held for 60 seconds.

Select The Fine

Copper Finish You Want

The new ALPOLIC® Natural Metal Series currently offers designers and architects two Revere/ALPOLIC® Copper Composite finishes. The Revere/ALPOLIC® milled copper finish changes with time and weathering, with the natural copper surface's ever-changing patina constantly evolving to add richness and depth to any building's façade. Revere/ALPOLIC® Copper Composite Material is also available in a post-patinaed version that presents the natural beauty and finish of weathered copper. The ALPOLIC® Natural Metal Series will also be offering other distinctive new Revere/ALPOLIC® Copper finishes in the coming months.

Use Copper In Places

It Has Never Been Before

Like solid copper, the Revere/ALPOLIC® Copper Composite Material's inherent structural strength and highly durable finish stand up well to constant usage, making it ideal

for cladding new buildings or recladding existing structures. With a weight/strength ratio far below conventional materials, Revere/ALPOLIC® Copper Composite panels also speed construction time, offering designers and architects significant savings in labor and materials alike. In addition, the 100% recyclable panels can also work well on interiors and exteriors, entryways, canopies, column covers, soffits and fascias.

Capture The Natural

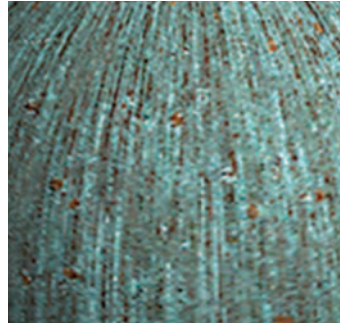
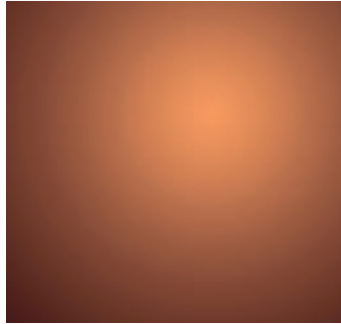
Beauty Of Copper Today

Just imagine the natural beauty of copper on new or existing buildings situated in natural settings. With Revere/ALPOLIC® Copper Composite Material, you get the innovation of ALPOLIC® and the rich tradition of Revere in one new product line, giving you the distinctive look and feel of natural copper without the weight. For more technical specifications and information, please visit us at www.alpolic-usa.com. For availability and pricing of the Revere/ALPOLIC® Copper Composite Panels, please call ALPOLIC® at 1-800-422-7270.

ALPOLIC®

INNOVATION • STYLE • PERFORMANCE

ALPOLIC®'s Rich Copper Composite Finish Improves With Age



General Information

Now you can get a Copper Composite Material (CCM) that changes with time and weathering. Like solid copper, ALPOLIC®'s Copper panel is perfect for architectural wall cladding applications and accent trim on buildings. The natural copper surface's ever-changing finish constantly evolves, adding richness and depth to any building's façade. For the flat rich look of copper without the weight, look to ALPOLIC® copper.

Product Properties

ALPOLIC®'s (CCM) is produced by bonding two thin sheets of copper on either side of an extruded thermoplastic core. ALPOLIC® offers the rigidity of heavy-gauge sheet metal in a lightweight copper-faced composite material. CCM also features such attributes as superior flatness, vibration dampening, durability and ease of maintenance.

Product Characteristics

ALPOLIC® Copper (CCM) offers the same flatness, rigidity, workability, formability and quality features of standard ALPOLIC® ACM products. It can be cut, bent, curved to a 6" radius, routed, sawed, filed, drilled, screwed and welded to form complex shapes.

ALPOLIC® Copper (CCM) has been successfully tested in accordance with ASTM E72-95, "Standard Test Methods of Conducting Strength Tests for Building Construction," Section 12, titled "Transverse Load-Specimen Vertical."

Product Tolerance

Width..... ±0.08"(±2mm)
Length..... ±0.16"(±4mm)
Thickness
4mm..... ±0.008"(±0.2mm)
6mm..... ±0.012"(±0.3mm)
Bow.....Maximum 0.5% of length and/or width
Squareness.....Maximum 0.2"(5mm)
Weight (4mm/12 oz. Skin) 2.08 lb/sq. ft.
ALPOLIC® CCM is supplied with factory-cut edges without displacement of copper or protrusion of core.

Surface Treatment

ALPOLIC® Copper (CCM) mill finish provides a natural copper skin with a color and gloss variation that is consistent with the natural color variation of copper.

Standard Sizes

Standard Width.....38 "(965mm)
Standard Length.....6'0"-24'0"(1829mm-7315mm)

Copper Alloy C11000 thickness 0.016"(12 oz.) Copper Alloy C11000 thickness 0.016 (12 oz.)
Total thickness 4mm & 6mm
Protective Film Applied on exterior skin (12 oz.)

For more technical specifications and information, please visit us at www.alpolic-usa.com. For samples or a list of ALPOLIC® fabricators, please call 1-800-422-7270, or e-mail us at info@alpolic.com.

U.S. HEADQUARTERS

Mitsubishi Chemical FP America, Inc.

Composite Materials Division

401 Volvo Parkway, Chesapeake, VA 23320 Telephone: 800-422-7270, Facsimile: 757-436-1896

www.alpolic-usa.com e-mail: info@alpolic-usa.com

ALPOLIC®

INNOVATION • STYLE • PERFORMANCE

©2006 Mitsubishi Chemical FP America, Inc. All rights reserved. ALPOLIC® is a registered trademark of Mitsubishi Chemical Corporation.