

## TYM- Telescoping Box Frame Roller Gate



We Close

Openings



**Tymetal Corp. introduces a new gate design to close openings that have restricted back space requirements.**



The Tymetal Telescoping Box Frame Roller Gate (patent pending) is a ground track roller gate that includes an internal extension gate frame which allows smaller gates to close bigger openings. For example an 60' opening could be closed with a gate that has an overall length of less than 37' (prior cantilever designs would have required 90')!

### Telescoping Gate Features:

- Closes large openings but stores in a small space (a 50-60% decrease when compared to standard cantilever designs).
- Stores in slightly over  $\frac{1}{2}$  the clear opening length. Parked Length = (Clear opening + 13Ft.)/2
- Uses a standard gate operator.
- Closes openings up to 83'
- Safety clips are additional high wind protection to help prevent gate tip over in high wind conditions.
- All gate panels are supported by anti-friction ball or roller bearings resulting in low operating forces, low maintenance, and extended gate service life.
- Available with various in fills (chain link, etc.) or ornamental pickets.



Please contact Tymetal for project specific drawings and specifications at 800-328-GATE (4283)

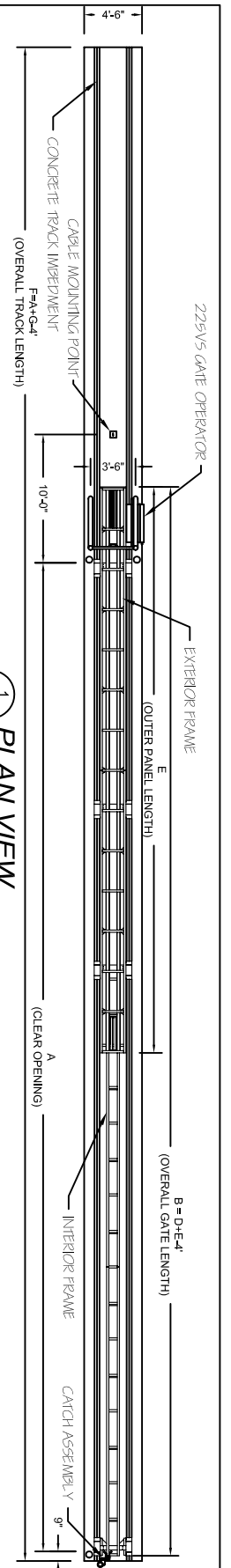
# TYMETAL CORP.

TYM-TC38 ©March 2008

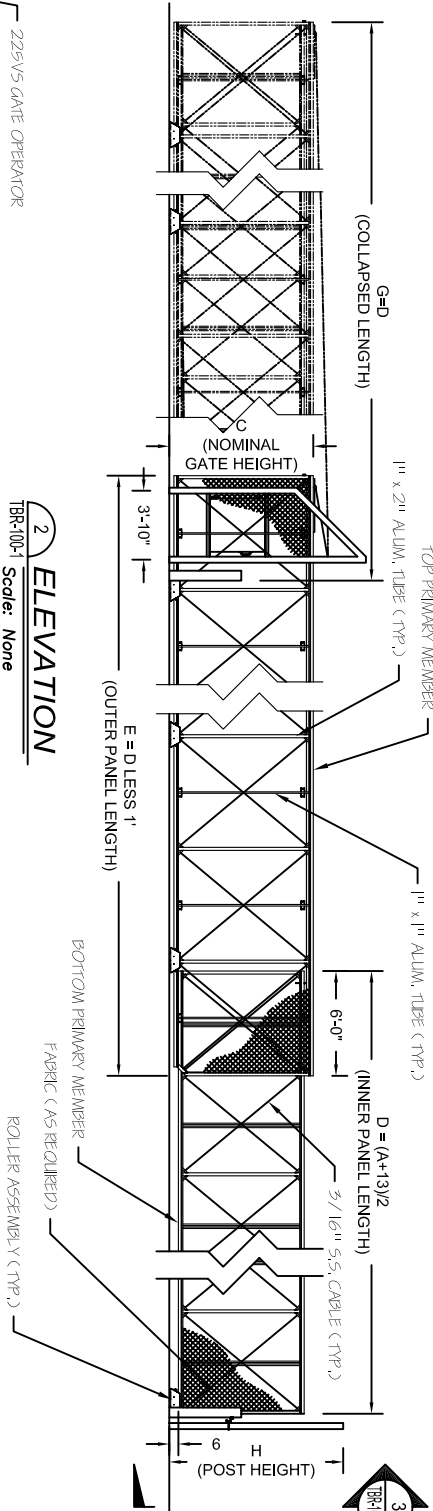
2549 State Route 40  
Greenwich, NY 12834

A FORT MILLER GROUP COMPANY  
[www.tymetal.com](http://www.tymetal.com)

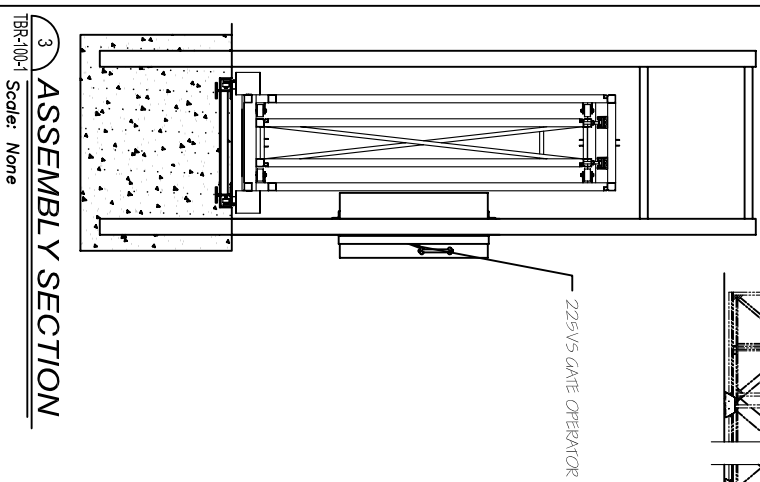
1-800-328-GATE (4283)  
Fax: 1-518-692-9404



1 PLAN VIEW  
TBR-100-1 Scale: None



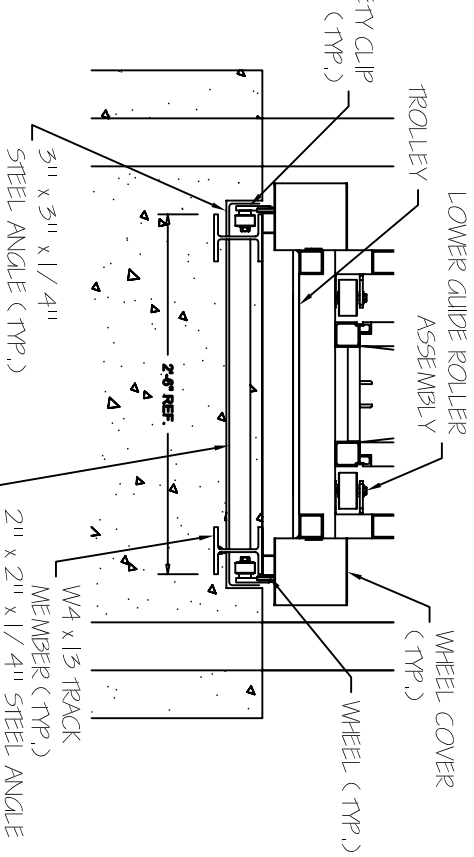
2 ELEVATION  
TBR-100-1 Scale: None



3 ASSEMBLY SECTION  
TBR-100-1 Scale: None

CRITICAL DIMENSION CHART

A	CLEAR OPENING	F	OVERALL TRACK LENGTH
B	OVERALL GATE LENGTH	G	COLLAPSED LENGTH
C	NOMINAL GATE HEIGHT	H	POST HEIGHT
D	INNER PANEL LENGTH		
E	OUTER PANEL LENGTH		



4 TRACK IMBEDMENT SECTION  
TBR-100-3 Scale: None

APPROVAL (To be completed by customer):  
Name (Print): \_\_\_\_\_  
Signature: \_\_\_\_\_ Date: \_\_\_\_\_

<p>2549 STATE ROUTE 40 GREENWICH, N.Y. 12834 PH: (800) 328-4283 - FX: (518) 692-9404</p>	<p><b>PROPRIETARY &amp; CONFIDENTIAL</b> The information contained in this drawing is the sole property of TYMETAL, CORP. Any reproduction in part or as a whole without the written permission of TYMETAL, CORP. is prohibited.</p>	<p>DRAWN BY: BGG DATE: 8/07/08 CHECKED BY: DWT DATE: 8/07/08 SCALE: As Noted REVISION LEVEL: R1</p>	<p>PROJECT: SUBJECT: Telescoping Box Frame Roller Gate CONTRACTOR: ARCHITECT/ENGINEER:</p>	<p>DIRECTORY\CAD FILE: TBR-100 R1 SHEET NUMBER: 1 of 5 DRAWING NUMBER: TBR-100-1</p>
--	--	---	--	--