

TRANZFORM® ACCORDION FOLDING FIRE DOORS



TRANZFORM FIRE Model ERP10



TranZform Accordion Folding Fire Doors are rated physical fire barriers that protect openings with minimal headroom from the spread of fire and smoke. TranZform Fire units provide automatic closing in the event of fire detection. For use in required means of egress openings. An alternative to banks of fire rated swing doors. Perfect for elevator lobbies and area separations. STC 41.

Labeling: UL 3, 1 1/2, 1, 3/4, 1/2 hour and 20 minute labels available. UL "S" leakage rated assembly label for smoke and draft control also available. Factory Mutual approval.

Sizes: Virtually any width opening, 3'6" to 22' H standard construction.

Operation: Motor operation provided as standard for controlled automatic closing with emergency exit capability and ease of testing.

Stack Area: Pocket depth = 2" per foot + 24" with 1/2 HP operator. Consult factory for 1/4 and 1 HP operators.

TranZform Fire Door Benefits:

- **Less Headroom Clearance Required** than Rolling Fire Doors.
- **For use in openings that are part of a required means of egress.**
- **ADA Compliance:** TranZform Fire units comply with the American with Disabilities Act accessibility standards.
- **Fail-safe emergency response capability.** When an alarm is activated, TranZform Fire closes automatically to prevent the spread of fire and smoke, even in the event of a power failure.
- **Quality Components:** Heavy duty roller with steel hanger pin assembly, mechanically secured hinges and drive chain configuration all ensure long life and allow for simple, cost effective service.
- **Balanced Materials Equals Minimal Hang Weight** of approximately 5.5 lbs. per ft², extended.

TranZform Options Include:

- **Single Slide or Bi-Parting Construction.** Curved track available.

COMPONENT FEATURES AND OPTIONS

PANELS AND HINGES

24 gauge, 4 1/2" wide corrugated steel panels in a double wall construction, finish coated steel. Coating process includes a flexible urethane primer followed by a high performance, medium gloss, baked-on polyester coating in standard steel gray color. Full height metal hinges, material and finish to match door panels. Consult factory for optional finish colors.

HEADER AND FLOOR SWEEPS

Continuous, fire retardant, flat black flexible seals attached to the top and bottom of the panels protect against the passage of air and smoke.

LEAD POST

24 gauge, commercial grade, coated, steel member color matched to wall panels. Lead sensing edge provided standard. Internally mounted plumb bar support for alignment during operation and tight door closure.

WALL MOUNTED STRIKE POST

Recessed 18 gauge coated cold rolled steel member receives the lead post. Finished to match door panels.

FLOATING JAMB

18 gauge aluminumized steel assembly that travels within the storage pocket.

TRACK

Interconnected double rail heavy duty extruded aluminum or steel shape supports and retains the roller assemblies. Multiple styles available for varying field ceiling construction. Header support construction is not by Cornell.

ROLLERS

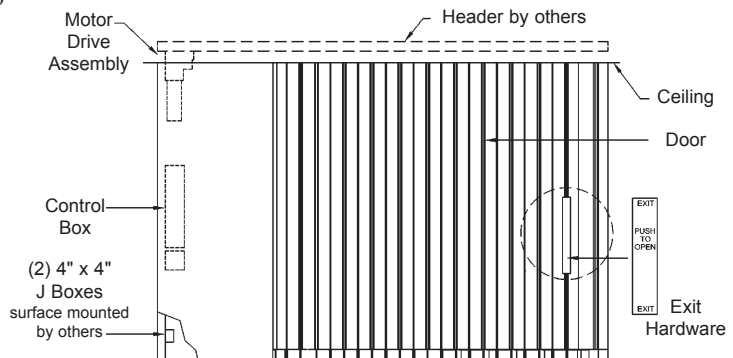
Every panel is fitted with a nylon wheel, ball bearing roller with steel hanger pin assembly for wall panel support and smooth operation. Lead post plumb bar assembly is suspended by a 12 wheel ball bearing trolley system.

EMERGENCY EXIT HARDWARE

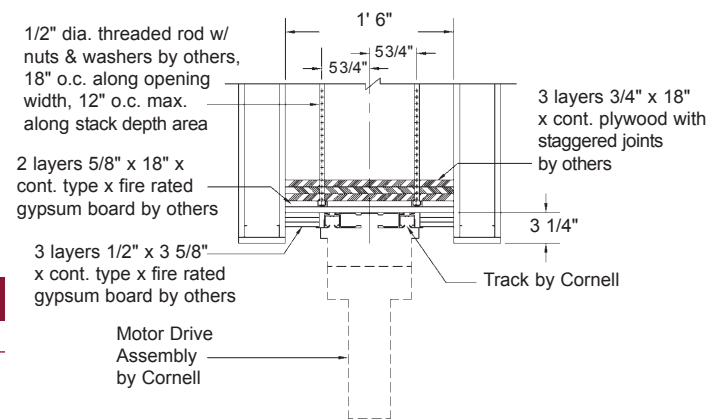
ADA compliant, clearly marked vertical panic bar provided as standard, both sides. Additional panic bars available for wide doors.

DETAILS AND CLEARANCES

ELEVATION - TYPICAL MOTOR ASSEMBLY



HEADER DETAIL - TYPICAL POCKET MOUNTED MOTOR



PLAN VIEW - UNIT WITH STORAGE POCKET

