

READY-TRACK™

A RADIUS TRACK® PRODUCT

Hand-bendable Ready-Track is the fast and dependable way to frame a curved wall while you're on the job site. Sold in straight sections, Ready-Track holds its shape once formed, so it installs rapidly and greatly reduces labor costs.

Form Ready-Track by hand to any curve or arch shape you want, then install either wood or steel studs. Framing screws can be easily added at each tab for additional stiffness and a permanently locked shape. Because the screws install on just one side of the track, Ready-Track saves a lot of time.

Ready-Track bends both ways and easily forms challenging compound curves. To make an S-curve that requires framing screws, just combine a series of Ready-Track sections.

Ready-Track is an ideal alternative to cutting, snipping, or other shaping methods with wood or steel on the job site. It is more economical to use than other products that may require extra on-site assembly. Ready-Track profiles are available for standard residential and commercial framing sizes for use with wood or steel.

Contact your local distributor for Ready-Track pricing and availability.

APPLICATIONS

For curved wall and ceiling surfaces and arch shapes. See installation instructions for details on how to use Ready-Track for specific applications.

PRODUCT SPECIFICATIONS

ASTM A653 galvanized steel 20-gauge
ASTM A653 coating designation G-60

STANDARD SIZES

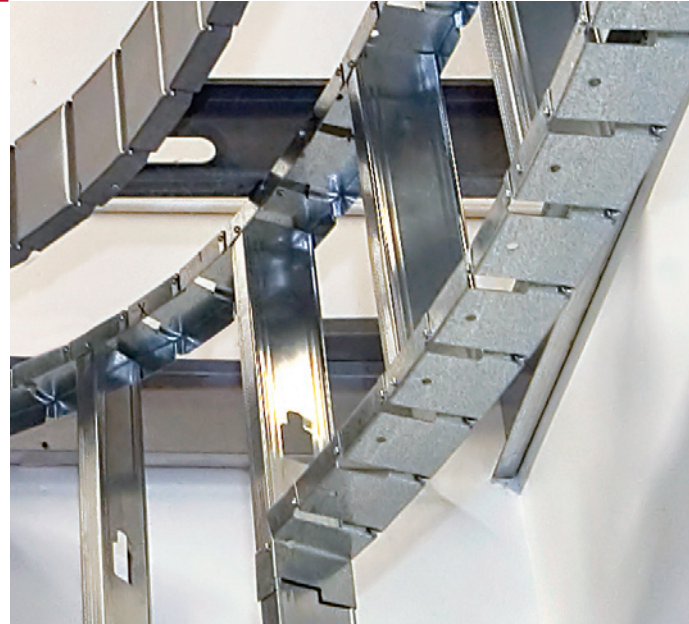
	Minimum Web Bend	Curve Radii Flange Bend
RT250-8 (2-1/2" x 1-1/4" x 8' length)	10"	12"
RT250-10 (2-1/2" x 1-1/4" x 10' length)	10"	12"
RT350-8 (3-1/2" x 1-1/4" x 8' length)	16"	12"
RT362-8 (3-5/8" x 1-1/4" x 8' length)	16"	12"
RT362-10 (3-5/8" x 1-1/4" x 10' length)	16"	12"
RT400-8 (4" x 1-1/4" x 8' length)	16"	12"
RT400-10 (4" x 1-1/4" x 10' length)	16"	12"
RT550-8 (5-1/2" x 1-1/4" x 8' length)	20"	12"
RT600-8 (6" x 1-1/4" x 8' length)	20"	12"
RT600-10 (6" x 1-1/4" x 10' length)	20"	12"

RADIUS TRACK CORPORATION

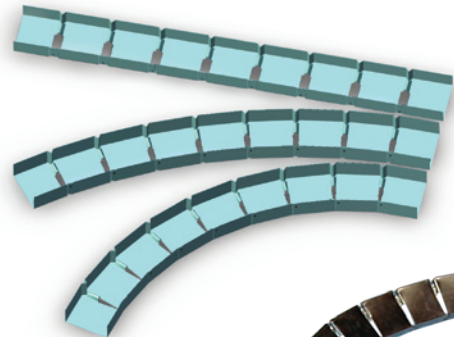
1-888-872-3487 www.radiustrack.com

e-mail: info@radiustrack.com | fax: 763-795-8884

9320 Evergreen Boulevard N.W., Suite G
Minneapolis, Minnesota 55433

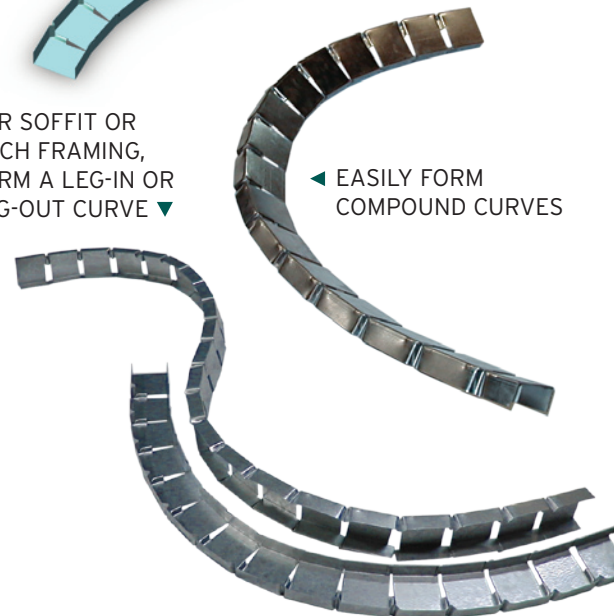


▼ QUICKLY FORM ANY RADIUS YOU NEED



FOR SOFFIT OR
ARCH FRAMING,
FORM A LEG-IN OR
LEG-OUT CURVE ▼

◀ EASILY FORM
COMPOUND CURVES



RADIUS TRACK®
the curved framing experts