

Outsulation® Plus System

DSC445

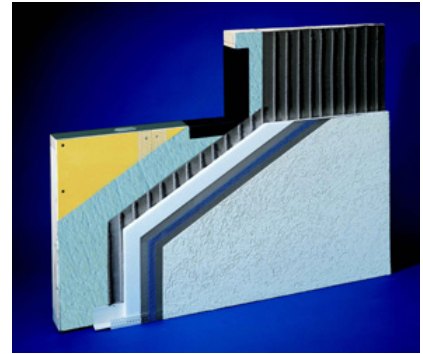
The High-Performance Moisture Drainage EIF System That Incorporates An Air and Water-Resistive Barrier (WRB)

Summary

Dryvit offers a family of performance-based systems that allows architects and owners to meet the specific demands of any given project. Dryvit's original Outsulation® System has been installed on over 350,000 buildings worldwide. Today, due to the increased demands for a wall system to be able to drain away incidental moisture, the Outsulation concept has grown into a family of related systems, each building upon the other to achieve specific performance goals.

System Components

1. Backstop® NT / Dryflex or Airsulation Water-Resistive Barrier Coatings
2. Dryvit Grid Tape™ / AquaFlash Mesh
3. Dryvit AquaFlash™ System or Flashing Tape™ and Surface Conditioner™
4. Dryvit Drainage Track™ (Shown) or Dryvit Drainage Strip™ adhered with Dryvit AP Adhesive®
5. Dryvit Adhesive in vertical notched trowel configuration
6. Insulation Board
7. Dryvit Reinforced Base Coat
8. Dryvit Finish



Efficient and Economical

Outsulation Plus expands upon the proven weatherability and insulating qualities of Outsulation by adding a second line of defense against air, moisture and weather. This is accomplished with a coating of Backstop NT or one of Dryvit's other WRB products in conjunction with Dryvit's AquaFlash System or flashing tape at all sills of openings. Outsulation Plus goes one step further through the use of adhesive channels to provide moisture drainage. These channels work in tandem with either of two system termination options, resulting in an efficient and economical system that is easy to install.

Why the choice Water Resistive Barriers?

The drainage capacity present in Outsulation Plus will evacuate "incidental" water that, for a variety of reasons, may find its way behind the EPS insulation. Water Resistive Barriers (WRBs) prevent this moisture from coming into contact with the substrate, as it drains. All Dryvit WRBs are Classified in Canada as a Type III air barrier, but offer arrange of vapour permeability for highly permeable Backstop NT, to Airsulation's Type 1 vapour barrier classification (less than 15 metric perms), allowing the designer to balance exterior wall system properties with the building's mechanical and interior climate controls. All WRBs are specially formulated, flexible, polymer-based, coatings provided air and moisture barrier function. Dryvit's WRBs are an essential element of the Outsulation Plus System. Details regarding the performance of Dryvit barriers are available upon request from Dryvit.

Dryvit...Proven For Over 35 Years

Dryvit Systems Canada is an ISO 9001:2000 certified company. ISO standards have been established worldwide as a common denominator for product excellence. Dryvit is the recognized leader in EIFS technology. With leadership comes an obligation and commitment to research and development. The Outsulation Plus System is an example of our determination to continuously evaluate market demands and develop new and exciting products.

Warranty

Dryvit Systems Canada shall provide a written moisture drainage and limited materials warranty against defective material upon written request. Dryvit shall make no other warranties, expressed or implied. Dryvit does not warrant workmanship. Full details are available from Dryvit Systems Canada.

Dryvit Systems Canada
129 Ringwood Drive
Stouffville, Ontario
Canada L4A 8A2
1-800-263-3308
www.dryvit.com

Printed in Canada R6:05-02-07
©Dryvit Systems Canada 1998

Information contained in this product sheet conforms to the standard detail recommendations and specifications for the installation of Dryvit Systems Canada products as of the date of publication of this document and is presented in good faith. Dryvit Systems Canada assumes no liability, expressed or implied, as to the architecture, engineering or workmanship of any project. To ensure that you are using the latest, most complete information, contact Dryvit Systems Canada.

dryvit[®]
An RPM Company